

ARMY  
NAVY  
AIR FORCE

TM 11-5805-715-34P  
EE119-DB-PLG-010/E154 CV3478  
TO 31W2-2TTC39-14

---

**DIRECT SUPPORT AND GENERAL SUPPORT MAINTENANCE**  
**REPAIR PARTS AND SPECIAL TOOLS LIST**  
**(INCLUDING DEPOT MAINTENANCE REPAIR PARTS AND SPECIAL TOOLS)**  
**FOR**  
**CONVERTER, TELEPHONE SIGNAL CV-3478/TTC**  
**(NSN 5805-01-127-6943)**

---

DEPARTMENTS OF THE ARMY, THE NAVY, AND THE AIR FORCE  
6 SEPTEMBER 1985

TECHNICAL MANUAL  
 No. 11-5805-715-34P  
 TECHNICAL MANUAL  
 EE119-DB-PLG-010/E154 CV3478  
 TECHNICAL ORDER  
 No. TO 31W2-2TTC39-14



DEPARTMENTS OF THE ARMY,  
 THE NAVY, AND THE AIR FORCE

WASHINGTON, DC, 6 September 1985

**DIRECT SUPPORT AND GENERAL SUPPORT MAINTENANCE  
 REPAIR PARTS AND SPECIAL TOOLS LIST  
 (INCLUDING DEPOT MAINTENANCE REPAIR PARTS AND SPECIAL TOOLS)  
 FOR  
 CONVERTER, TELEPHONE SIGNAL CV-3478/TTC  
 (NSN 5805-01-127-6943)  
 Current as of 22 April 1985**

**REPORTING ERRORS AND RECOMMENDING IMPROVEMENTS**

You can help improve this manual. If you find any mistakes or if you know of a way to improve the procedures, please let us know. Mail your letter, DA Form 2028 (Recommended Changes to Publications and Blank Forms), or DA Form 2028-2 located in back of this manual direct to: Commander, US Army Communications-Electronics Command and Fort Monmouth, ATTN: AMSEL-ME-MP, Fort Monmouth, NJ 07703-5007.

For Air Force, submit AFTO Form 22 (Technical Order System Publication Improvement Report and Reply) in accordance with paragraph 6-5, Section VI, T.O. 00-5-1. Forward direct to prime ALC/MST.

For Navy, mail comments to the Commander, Naval Electronics System Command, ATTN: ELEX 8122, Washington, DC 20360.

In either case, a reply will be furnished direct to you.

**Table of Contents**

		Page	Illus Figure
SECTION	I. Introduction .....	1	
	II. Repair Parts List.....	1-1	
GROUP	00. Converter, Telephone Signal CV-3478/TTC.....	1-1	1
	Panel, Front Assy, SM-D-811455.....	2-1	2
	Card Set, SM-B-814618-2.....	3-1	3
	01. Printed Circuit Cards, A2, A3, A5, A7, A9, A11, A13, A15, A18, A20, A22, A24, A26, A29, A31, A33, A43		
	Circuit Card Assy, SM-E-809647 .....	4-1	4
	Circuit Card Assy, SM-E-816554 .....	5-1	5
	Circuit Card Assy, SM-E-816540 .....	6-1	6
	02. Low Voltage Power Supply, SM-D-817249-2.....	7-1	7
	Terminal Board Assy, 70421-304.....	8-1	8
	Circuit Card Assy, 70421-305 .....	9-1	9
	Series Pass Assy, 70421-303 .....	10-1	10
	Switcher, Heatsink, 70421-302 .....	11-1	11
	Scr Heatsink Assy, 70421-306 .....	12-1	12
	Diode Heatsink Assy, 70421-307 .....	13-1	13
	Cover Assy, 70421-301 .....	14-1	14
	03. Power and Signal Cables, Internal		
	Cable Power, SM-D-812377-1 .....	15-1	15
	Cable Assy, Electrical, SM-D-811745.....	16-1	16
	Cable Assy, Signal, SM-D-811235 .....	17-1	17
	Cable Assy, Signal, SM-D-811746 .....	18-1	18
	04. Connector Plate Assy, SM-D-814619.....	19-1	19
	05. Rear Panel Assy (See Group 00 for parts)		
SECTION	III. Special Tools List (Not applicable)		
	IV. National Stock Number and Part Number Index .....	I-1	

**SECTION I**

**INTRODUCTION**

**1. Scope**

This manual lists and authorizes spares and repair parts; special tools; special test, measurement, and diagnostic equipment (TMDE); and other special support equipment required for performance of direct support and general support maintenance of the CV-3478/TTC. It authorizes the requisitioning, issue, and disposition of spares, repair parts and special tools as indicated by the source, maintenance and recoverability (SMR) codes.

**2. General**

This Repair Parts and Special Tools List is divided into the following sections:

a. *Section II. Repair Parts List.* A list of spares and repair parts authorized by this RPSTL for use in the performance of maintenance. The list also includes parts which must be removed for replacement of the authorized parts. Parts lists are composed of functional groups in ascending numeric sequence, with the parts in each group listed in ascending item number sequence. Figure numbers are listed directly beneath the group header.

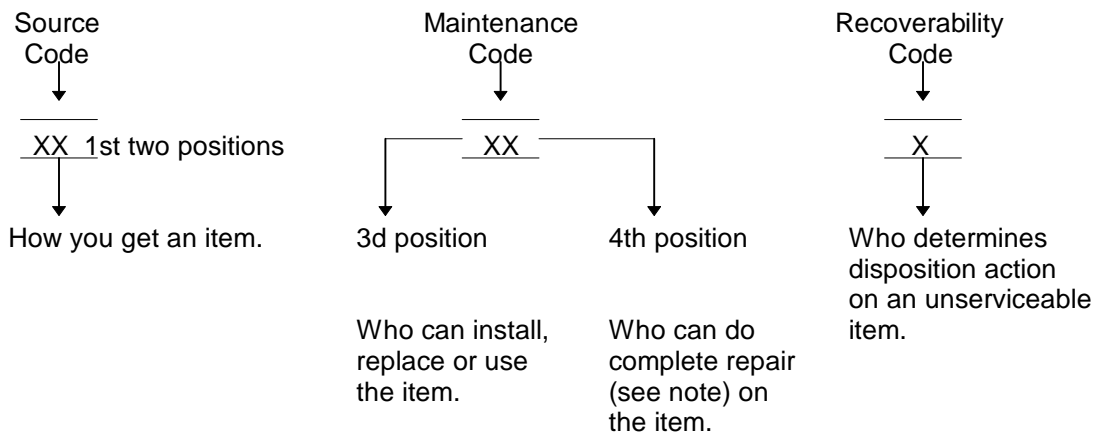
b. *Section III. Special Tools List.* Not applicable.

c. *Section IV. National Stock Number and Part Number Index.* A list, in National item identification number (NIIN) sequence, of all National stock numbered items appearing in the listing, followed by a list in alphameric sequence of all part numbers appearing in the listings. National stock numbers and part numbers are cross-referenced to each illustration figure and item number appearance.

**3. Explanation of Columns (Section II and III)**

a. *Item No. (Column (1)).* Indicates the number used to identify items called out in the illustration.

b. *SMR Code (Column (2)).* The source, maintenance, and recoverability (SMR) code is a five-position code containing supply/requisitioning information, maintenance category authorization criteria, and disposition instruction, as shown in the following breakout:



**NOTE**

Complete repair: Maintenance capacity, capability, and authority to perform all corrective maintenance tasks of the "Repair" function in a use/user environment in order to restore serviceability to a failed item.

(1) *Source code.* The source code tells you how to get an item needed for maintenance, repair, or overhaul of an end item/equipment. Explanations of source codes follows:

Code

Explanation

PA  
PB  
PC  
PD  
PE  
PF  
PG

Stocked items; use the applicable NSN to request/requisition items with these source codes. They are authorized to the category indicated by the code entered in the third position of the SMR code.

**NOTE**

Items coded PC are subject to deterioration.

KD  
KF  
KB

Items with these codes are not to be requested/requisitioned individually. They are part of a kit which is authorized to the maintenance category indicated in the third position of the SMR code. The complete kit must be requisitioned and applied.

MO-Made at org/AVUM category  
MF-Made at DS/AVUM category  
MH-Made at GS category  
ML-Made at Specialized Repair Activity (SRA)  
MD-Made Depot

Items with these codes are not to be requested/requisitioned individually. They must be made from bulk material which is identified by the part number in the description and usable on code (UOC) column and listed in the Bulk Material group of the repair parts list. If the item is authorized to you by the third position code of the SMR code, but the source code indicates it is made at a higher category, order the item from the higher category of maintenance.

AO-Assembled by org/AVUM category  
AF-Assembled by DS/AVIM category  
AH-Assembled by GS category  
AL-Assembled by SRA  
AD-Assembled by Depot

Items with these codes are not to be requested/requisitioned individually. The parts that make up the assembled item must be requisitioned or fabricated and assembled at the category of maintenance indicated by the source code. If the disposition code of the SMR code authorizes you to replace the item, but the source code indicates the item is assembled at a higher category, order the item from the higher category of maintenance.

Code

Explanation

XA-Do not requisition an "XA" coded item. Order its next higher assembly.

XB-If an "XB" item is not available from salvage, order it using the FSCM and part number given.

XC-Installation drawing, diagram, instruction sheet, field service drawing, that is identified by manufacturers part number.

XD-Item is not stocked. Order an "XD" coded item through normal supply channels using the FSCM and part number given, if no NSN is available.

**NOTE**

Cannibalization or controlled exchange, when authorized, may be used as a source of supply for items with the above source codes, except for those source coded "XA" or those aircraft support items restricted by requirements of AR 750-1.

(2) *Maintenance code.* Maintenance codes tell you the category of maintenance authorized to USE and REPAIR support items. The maintenance codes are entered in the third and fourth positions of the SMR code as follows:

(a) The maintenance code entered in the third position tells you the lowest maintenance category authorized to remove, replace, and use an item. The maintenance code entered in the third position will indicate authorization to one of the following categories of maintenance.

<i>Code</i>	<i>Application/Explanation</i>
C-Crew or operator maintenance done within organizational or aviation maintenance.	
O-Organizational or aviation unit category can remove, replace, and use the item.	
F-Direct support or aviation intermediate category can remove, replace, and use the item.	
H-General support category can remove, replace, and use the item.	
L-Specialized repair activity can remove, replace, and use the item.	
D-Depot category can remove, replace, and use the item.	

(b) The maintenance code entered in the fourth position tells whether or not the item is to be repaired and identifies the lowest maintenance category with the capability to do complete repair (i.e., perform all authorized repair functions). This position will contain one of the following maintenance codes.

**NOTE**

Some limited repair may be done on the item at a lower category of maintenance, if authorized by the Maintenance Allocation Chart (MAC) and SMR codes.

<i>Code</i>	<i>Application/Explanation</i>
O-Organizational or aviation unit is the lowest category that can do complete repair of the item.	
F-Direct support or aviation intermediate is the lowest category that can do complete repair of the item.	
H-General support is the lowest category that can do complete repair of the item.	
L-Specialized repair activity (designate the specialized repair activity) is the lowest category that can do complete repair of the item.	
D-Depot is the lowest category that can do complete repair of the item.	
Z-Nonreparable. No repair is authorized.	
B-No repair is authorized. (No parts or special tools are authorized for the maintenance of a "B" coded item). However, the item may be reconditioned by adjusting, lubricating, etc., at the user category.	

(3) *Recoverability code.* Recoverability codes are assigned to items to indicate the disposition action on unserviceable items. The recoverability code is entered in the fifth position of the SMR Code as follows:

<i>Recoverability codes</i>	<i>Application/Explanation</i>
Z-Nonreparable Item. When unserviceable, condemn and dispose of the item at the category of maintenance shown in the third position of SMR Code.	
O-Reparable item. When uneconomically repairable, condemn and dispose of the item at organizational or aviation unit category.	
F-Reparable item. When uneconomically repairable, condemn and dispose of the item at direct support or aviation intermediate category.	
H-Reparable item. When uneconomically repairable, condemn and dispose of the item at general support category.	
D-Reparable item. When beyond lower category repair capability, return to depot. Condemnation and disposal of item not authorized below depot category.	
L-Reparable item. Condemnation and disposal not authorized below specialized repair activity (SRA).	
A-Item requires special handling or condemnation procedures because of specific reasons (e.g., precious metal content, high dollar value, critical material, or hazardous material). Refer to appropriate manuals/directives for specific instructions.	

c. *FSCM (Column (3)).* The Federal Supply Code for Manufacturer (FSCM) is a 5-digit numeric code which is used to identify the manufacturer, distributor, or Government agency, etc., that supplies the item.

d. *Part Number (Column (4)).* Indicates the primary number used by the manufacturer (individual, company, firm, corporation, or Government activity), which controls the design and characteristics of the item by means of its engineering drawings, specifications, standards, and inspection requirements to identify an item or range of items.

**NOTE**

When you use a NSN to requisition an item, the item you receive may have a different part number from the part ordered.

e. *Description and Usable on Code (UOC) (Column (5)).* This column includes the following information.

(1) The Federal item name and, when required, a minimum description to identify the item.

(2) The statement "END OF FIGURE" appears just below the last item description in Column (5) for a given figure in both section II and section III.

f. *Qty (Column (6))*. Indicates the quantity of the item used in the breakout shown on the illustration figure, which is prepared for a functional group, subfunctional group, or an assembly. A "V" appearing in this column in lieu of a quantity indicates that the quantity is variable and the quantity may vary from application to application.

#### 4. Explanation of Columns (Section IV)

##### a. *National Stock Number (NSN) Index.*

(1) *Stock number column*. This column lists the NSN by National item identification number (NIIN) sequence. The NIIN consists of the last nine digits of the NSN. When using this column to locate an item, ignore the first four digits of the NSN. When requisitioning items use the complete NSN (13 digits).

(2) *Fig. column*. This column lists the number of the figure where the item is identified/located. The illustrations are in numerical sequence in sections II and III.

(3) *Item column*. The item number identifies the item associated with the figure listed in the adjacent Fig. column. This item is also identified by the NSN listed on the same line.

b. *Part Number Index*. Part numbers in this index are listed by part number in ascending alphameric sequence.

(1) *FSCM column*. This column lists the Federal supply code for manufacturer (FSCM).

(2) *Part number column*. This column indicates the part number assigned to the item.

(3) *Stock number column*. This column lists the National stock number for the associated part number and manufacturer identified in the part number and FSCM columns to the left.

(4) *Fig. column*. This column lists the number of the figure where the item is identified/located in sections II and III.

(5) *Item column*. The item number is that number assigned to the item as it appears in the figure referenced in the adjacent figure number column.

#### 5. Special Information

a. *Associated Publications*. The publications listed below pertain to the CV-3478/TTC and its components:  
 TM 11-5805-681-12-1-6, Central Office Telephone, Automatic, ANfITC-39(V)  
 TM 11-5805-715-12, Converter, Telephone Signal CV-3478/TTC  
 TM 11-5805-715-20P, Converter, Telephone Signal CV-3478/TTC  
 TM 11-5805-715-34, Converter, Telephone Signals CV-3478/TTC.

b. *National Stock Numbers*. National stock numbers (NSN's) that are missing from P source coded items have been applied for and will be added to this TM by future change/revision when they are entered in the Army Master Data File (AMDF). Until the NSN's are established and published, submit exception requisitions to: Commander, US Army Communications-Electronics Command and Fort Monmouth, ATTN: AMSEL-MM, Fort Monmouth, NJ 07703-5006 for the part required to support your equipment.

#### 6. How to Locate Repair Parts

a. When National stock number or part number is not known.

(1) *First*. Using the table of contents, determine the assembly group or subassembly group to which the item belongs. This is necessary since figures are prepared for assembly groups and subassembly groups, and listings are divided into the same groups.

(2) *Second*. Find the figure covering the assembly group or subassembly group to which the item belongs.

(3) *Third*. Identify the item on the figure and note the item number.

(4) *Fourth*. Refer to the Repair Parts List for the figure to find the part number for the item number noted on the figure.

(5) *Fifth*. Refer to the Part Number Index to find the NSN, if assigned.

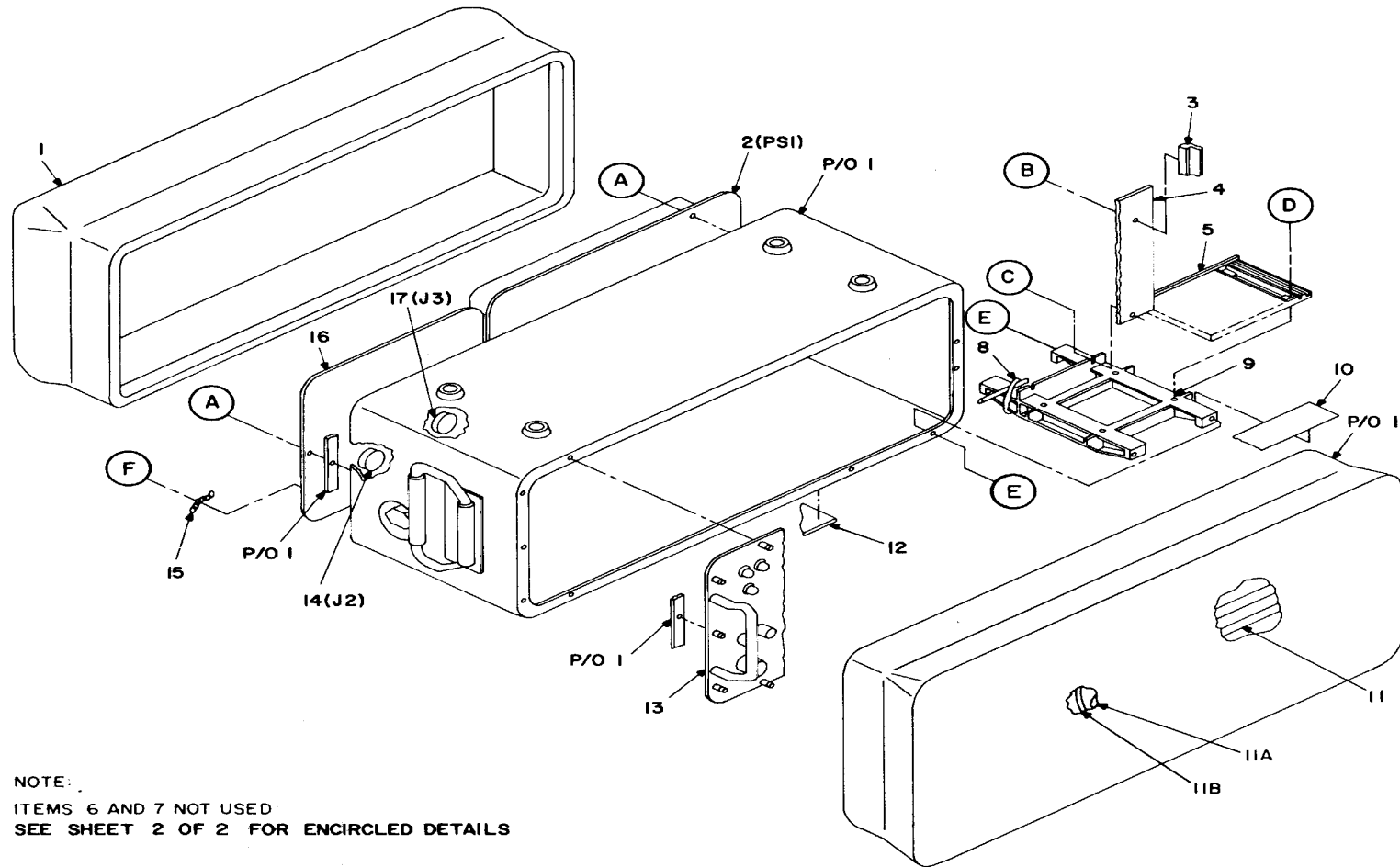
b. When National stock number or part number is known.

(1) *First*. Using the index of National stock numbers and part numbers, find the pertinent National stock number or part number. The NSN index is in National item identification number (NIIN) sequence (para 4a(1)). The part numbers in the part number index are listed in ascending alphameric sequence (para 4b). Both indexes cross-reference you to the illustration figure and item number of the item you are looking for.

(2) *Second*. After finding the figure and item number, verify that the item is the one you're looking for, then locate the item number in the repair parts list for the figure.

#### 7. Abbreviations

Not applicable.



NOTE:  
 ITEMS 6 AND 7 NOT USED  
 SEE SHEET 2 OF 2 FOR ENCIRCLED DETAILS

EL4QC001

Figure 1. Converter, Telephone Signal CV-3478/TTC (Sheet 1 of 2).

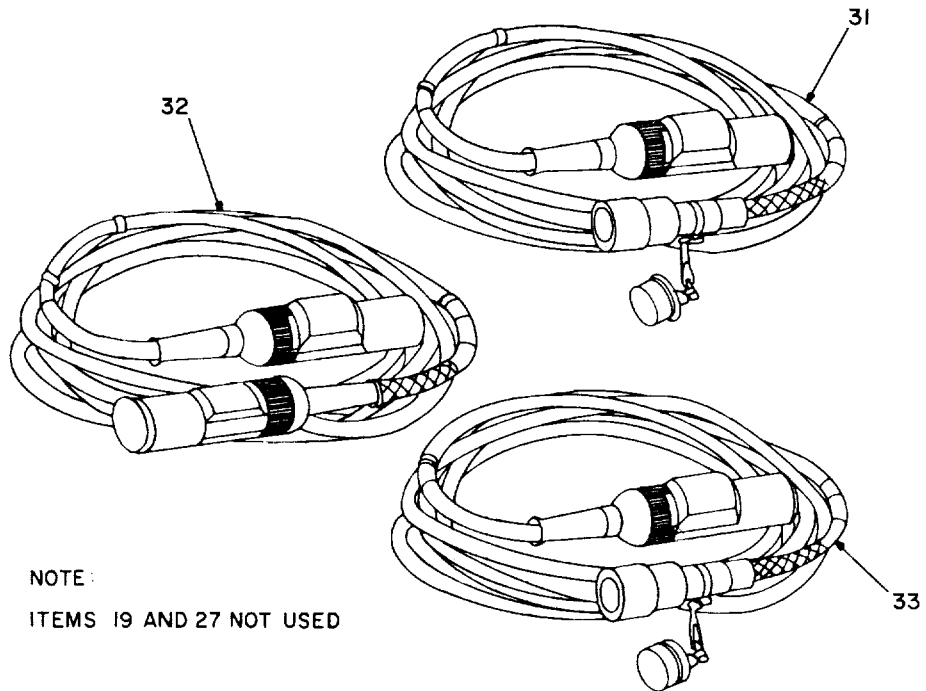
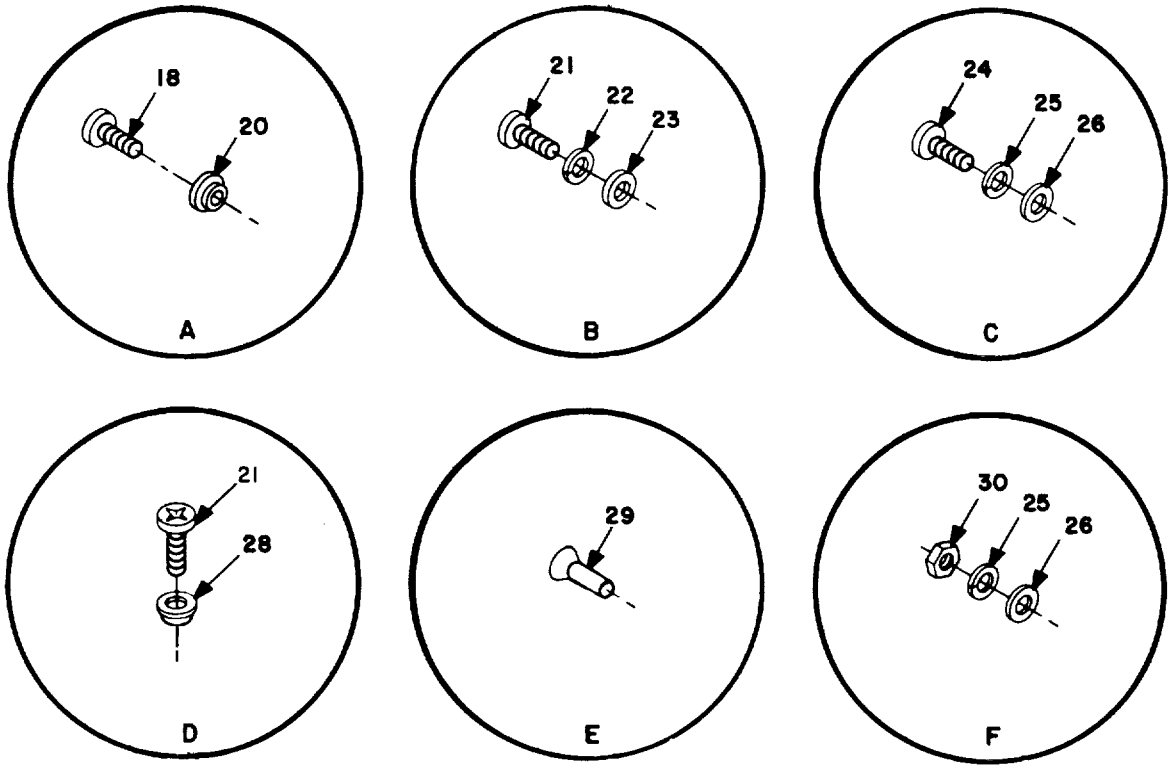


Figure 1. Converter, Telephone Signal CV-3478/TTC (Sheet 2 of 2).



SECTION II

TM 11-5805-715-34P

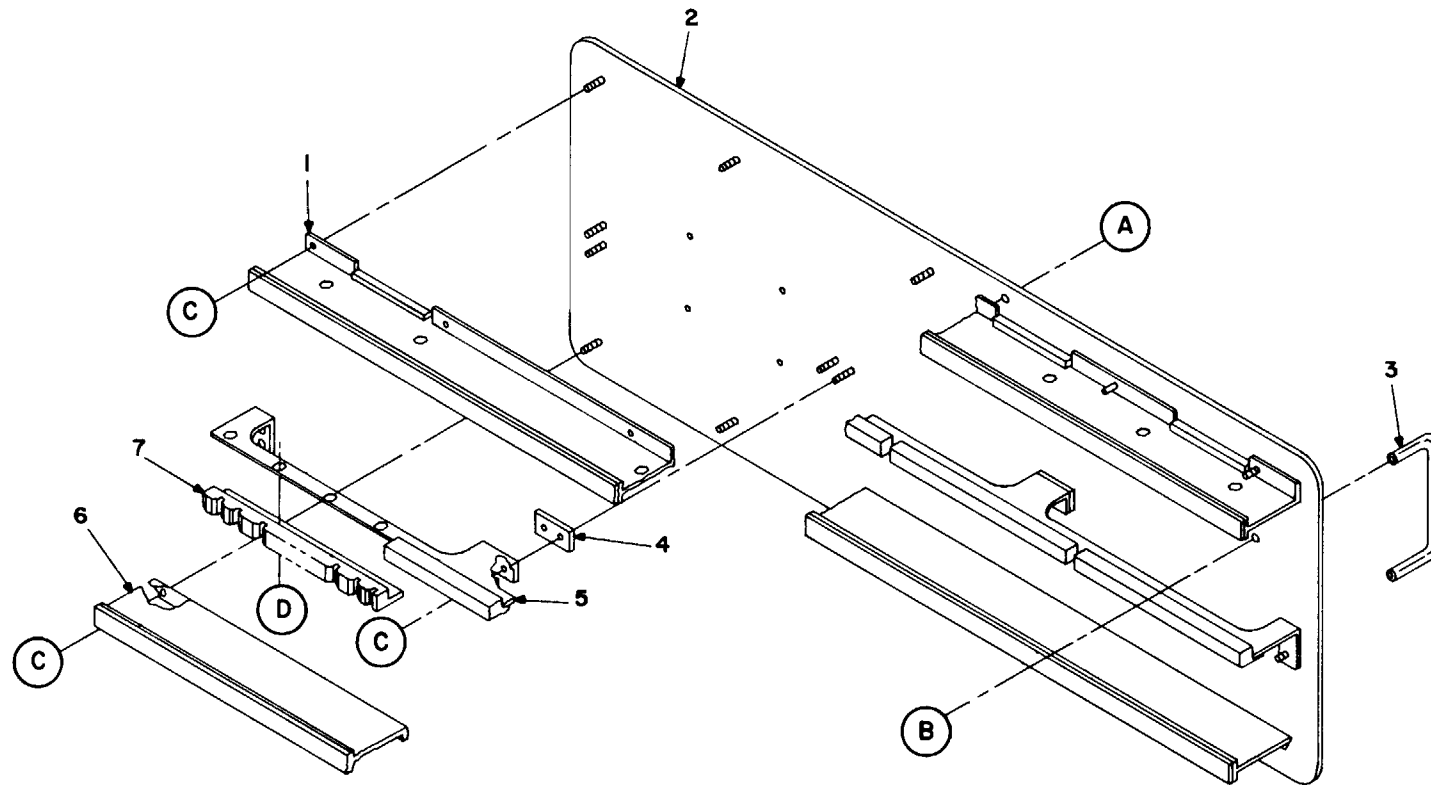
(1) ITEM NO	(2) SMR CODE	(3) FSCM	(4) PART NUMBER	(5) DESCRIPTION AND USABLE ON CODES (UOC)	(6) QTY
-------------------	--------------------	-------------	-----------------------	--	------------

GROUP 00. CONVERTER, TELEPHONE  
CV-3478/TTC

FIG. 1

1	XBFFF	80063	SM-D-811454	CASE EQPT,MOD.....	1
2	PAODD	11352	70421-01	POLWER SUPPLY.....	1
3	XBFZZ	87990	755090A0411-1	STIFFENER.....	5
4	XBFFF	80063	SM-D-814619	PLATE,CONNECTOR.....	1
5	XBFZZ	87990	755090A0410-1	GUIDE,CARD.....	8
8	PAFZZ	96906	MS3367-1-9	STRAP,TIEDOWN,ELECT.....	3
9	XBFZZ	87990	755090A0409-1	SUPPORT.....	8
10	XBFZZ	80063	SM-C-811405	STRIP,MARKING.....	1
11	PAOFF	80063	SM-D-812377-1	CABLE ASSEMBLY,POWE.....	1
11A	PAOZZ	80063	SM-A-811738-1	BAG,PLASTIC.....	1
11B	PAOZZ	80063	SM-A-838684-71	CORD ASSY, ELEC.....	2
12	XBFZZ	80063	SM-D-817305-1	PLATE,IDENT.....	1
13	XBFFF	80063	SM-D-811455	PANEL FR ASSY.....	1
14	PAOZZ	77820	21-293723-200	CONNECTOR,RECEPTACL.....	1
15	PAFZZ	96906	MS27502B23C	COVER,ELECTRICAL CO.....	2
16	XBFZZ	80063	SM-D-811404	PANEL,REAR.....	1
17	PAOZZ	77820	21-293723-201	CONNECTOR,RECEPTACL.....	1
18	PAFZZ	96906	MS51958-64	SCREW,MACHINE.....	22
20	PAFZZ	70318	A750N1000	COLLAR ROLLED.....	22
21	PAFZZ	96906	MS51957-15	SCREW,MACHINE.....	15
22	PAFZZ	96906	MS35338-135	WASHER,LOCK.....	31
23	PAFZZ	96906	MS15795-803	WASHER,FLAT.....	31
24	PAFZZ	96906	MS51957-29	SCREW,MACHINE.....	16
25	PAFZZ	96906	MS35338-136	WASHER,LOCK.....	18
26	PAFZZ	80063	SM-B-416109-1	WASHER,FLAT.....	18
28	PAFZZ	70318	A750N0400	COLLAR ROLLED.....	32
29	PAFZZ	96906	MS20605AD4W6	RIVET,BLIND.....	32
30	PAFZZ	96906	M535649-264	NUT,PLAIN,HEX.....	2
31	PAOFF	80063	SM-D-811235	CABLE ASSEMBLY,TELE.....	1
32	PAOFF	80063	SM-D-811745	CABLE ASSEMBLY,POWE.....	1
33	PAOZZ	81349	M55074/1-01	CONNECTOR,PLUG,ELEC.....	1

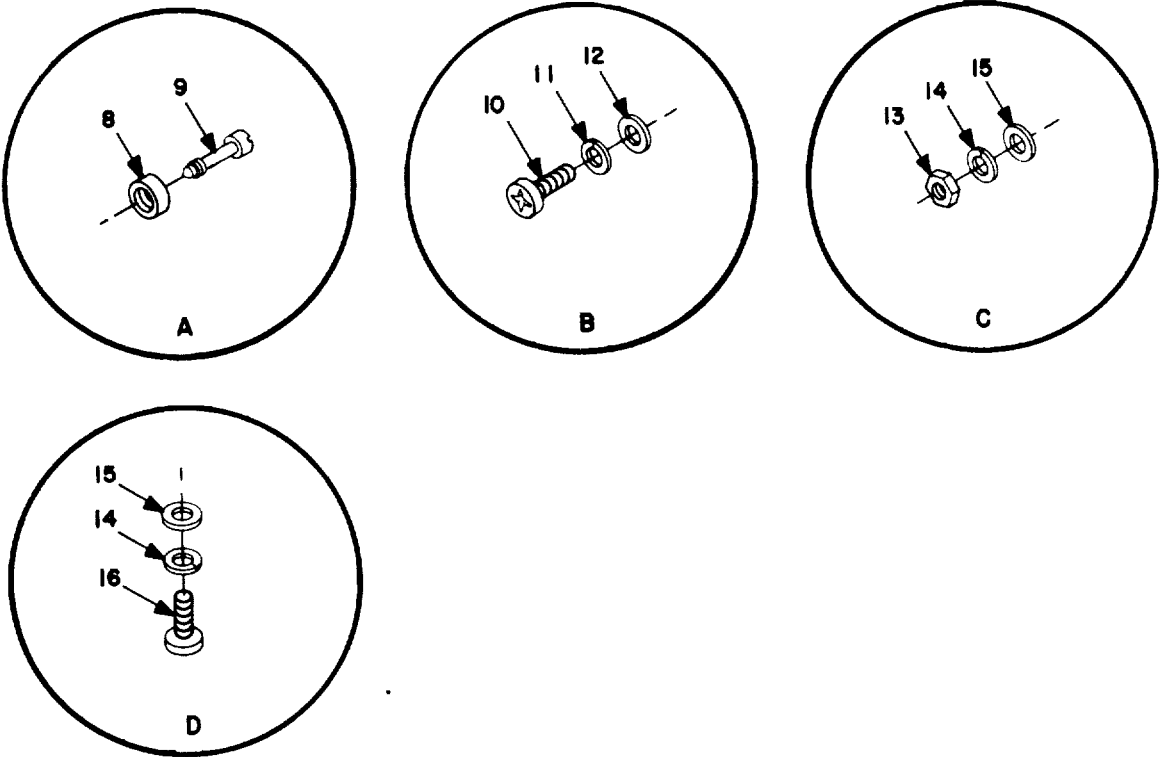
END OF FIGURE



SEE SHEET 2 OF 2 FOR ENCIRCLED DETAILS

EL4QC003

Figure 2. Panel, front assy, SM-D-811455 (Sheet 1 of 2).



EL4QC004

Figure 2. Panel, front assy, SM-D-811455 (Sheet 2 of 2).

SECTION II

TM 11-5805-715-34P

(1) ITEM NO	(2) SMR CODE	(3) FSCM	(4) PART NUMBER	(5) DESCRIPTION AND USABLE ON CODES (UOC)	(6) QTY
-------------------	--------------------	-------------	-----------------------	--	------------

GROUP 00. PANEL, FRONT ASSY  
SM-D-811455

FIG. 2

1	PAFZZ	87990	755090A0433-1	RETAINER,UPPER .....	1
2	XBFZZ	80063	SM-D-811456	PANEL,FRONT .....	1
3	PAFZZ	96906	MS39087-5	HANDLE,BOW .....	2
4	XBFZZ	80063	SM-B-811470	SPACER .....	2
5	XBFZZ	87990	755090A0440-1	SUPPORT,RETAIN .....	1
6	PAFZZ	87990	755090A0442-1	RETAINER,LOWER .....	1
7	PAFZZ	87990	755090A0413-1	RETAINER,CARD EDGE .....	4
8	PAFZZ	80205	NAS1523AA3B	PACKING WITH RETAIN .....	18
9	PAFZZ	06540	755090A0074-1	THUTBSCREW .....	18
10	PAFZZ	96906	MS51958-64	SCREW,MACHINE .....	4
11	PAFZZ	96906	MS35338-138	WASHER,LOCK .....	4
12	PAFZZ	96906	M515795-842	WASHER,FLAT .....	4
13	PAFZZ	96906	MS35649-244	NUT,PLAIN,HEXAGON.....	18
14	PAFZZ	96906	MS35338-135	I4ASHER,LOCK.....	34
15	PAFZZ	96906	MS15795-804	WASHER,FLAT .....	34
16	PAFZZ	96906	MS51957-14	SCREW,MACHINE .....	16

END OF FIGURE

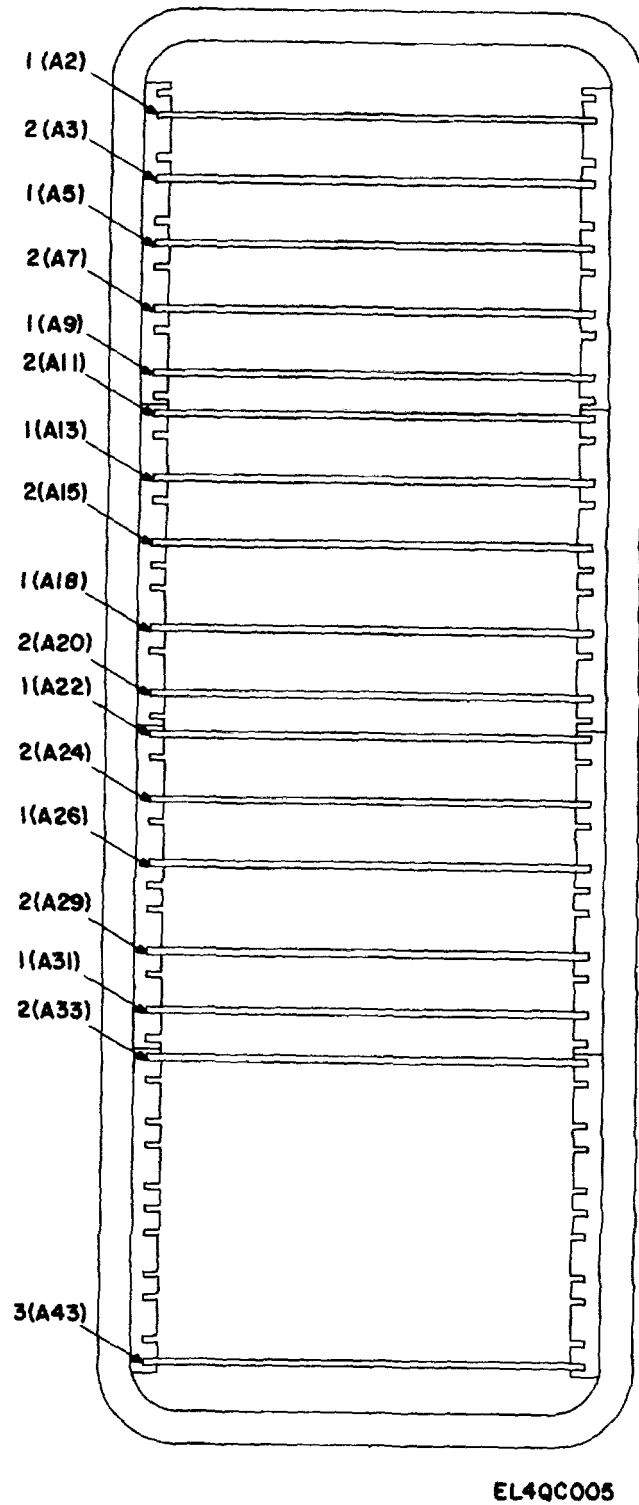


Figure 3. Card set, SM-B-814618-2.

SECTION II

TM 11-5805-715-34P

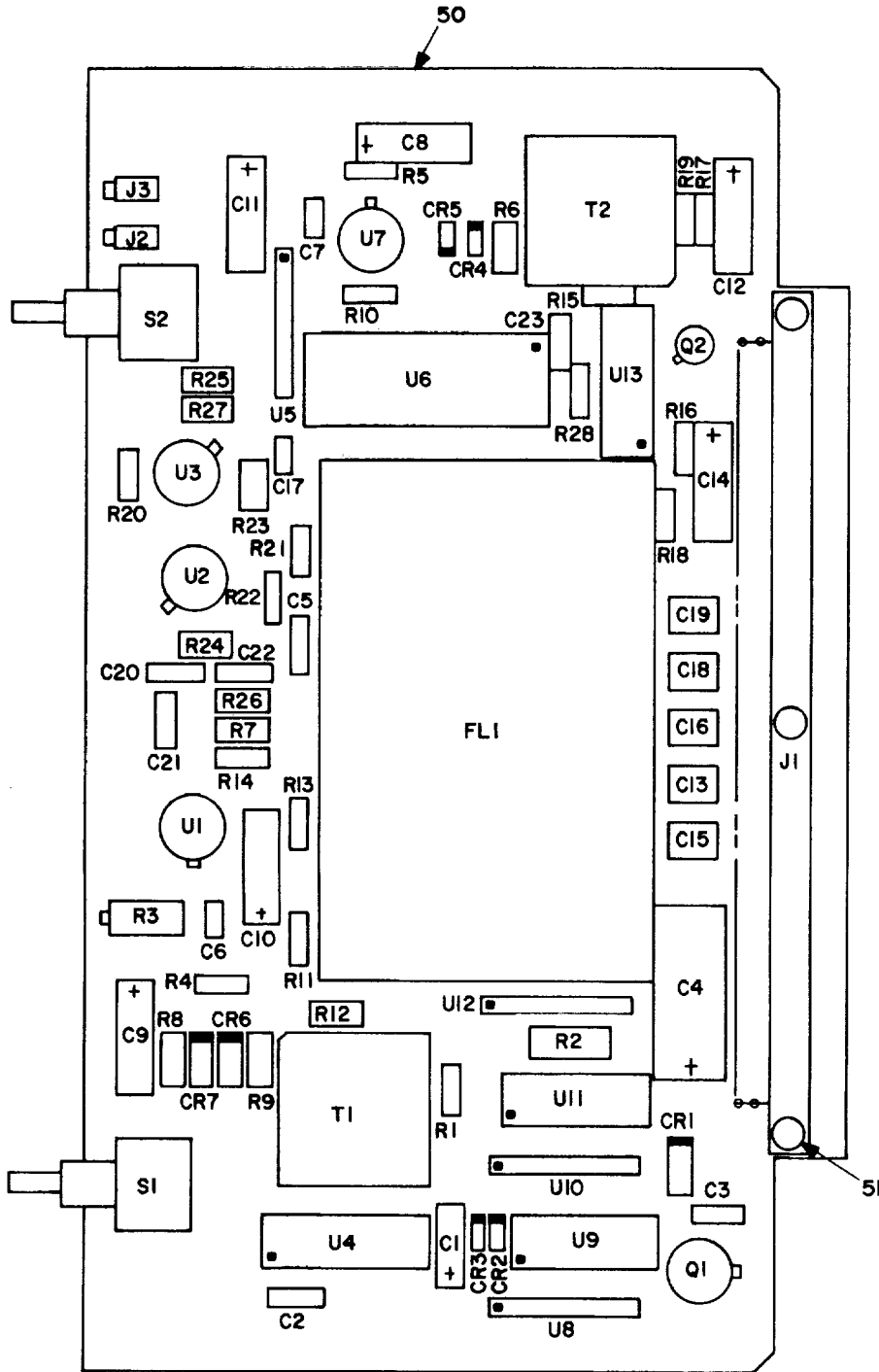
(1) ITEM NO	(2) SMR CODE	(3) FSCM	(4) PART NUMBER	(5) DESCRIPTION AND USABLE ON CODES (UOC)	(6) QTY
-------------------	--------------------	-------------	-----------------------	--	------------

GROUP 00. CARD SET,SM-B-814618-2

FIG. 3

1	PAOLL	80063	SM-E-809647	CIRCUIT CARD ASSEMB .....	8
2	PAODD	80063	SM-E-816554	CIRCUIT CARD ASSEMS .....	8
3	PAOLL	80063	SM-E-816540	CIRCUIT CARD ASSEMB .....	1

END OF FIGURE



REF DES.	ITEM NO.
CR1	1
CR2-5	2
CR6,7	3
C1	4
C2	5
C3	6
C4	7
C5	8
C6	9
C7	6
C8-11	10
C12	11
C13	12
C14	13
C15,16	12
C17	6
C18,19	12
C20	14
C21,22	15
C23	5
FL1	16
J1	17
J2,3	18
Q1	19
Q2	20
R1	21
R2	22
R3	23
R4,5	24
R6	25
R7	26
R8	27
R9	28
R10	24
R11	29
R12	30
R13	24
R14	29
R15-18	21
R19	31
R20-22	29
R23	32
R24	33
R25	34
R26	35
R27	36
R28	21
S1	37
S2	38
T1,2	39
U1-3	40
U4	41
U5	42
U6	43
U7	40
U8	44
U9	45
U10	46
U11	47
U12	48
U13	49

PREFIX REFERENCE DESIGNATIONS WITH ONE OF THE FOLLOWING, DEPENDING UPON ITS LOCATION IN THE UNIT.  
 A2, A5, A9, A13, A18, A22, A26, A31

EL4QC006

Figure 4. Circuit card assy, SM-E-809647.

(1) ITEM NO	(2) SMR CODE	(3) FSCM	(4) PART NUMBER	(5) DESCRIPTION AND USABLE ON CODES (UOC)	(6) QTY
-------------------	--------------------	-------------	-----------------------	--	------------

**GROUP 01. CIRCUIT CARD ASSY.  
SM-E-809647**

**FIG. 4**

1	PAHZZ	81349	JAN1N4372A	SEMICONDUCTOR DEVIC .....	1
2	PAHZZ	81349	JAN1N4148-1	SEMICONDUCTOR DEVIC .....	4
3	PAHZZ	81349	JAN1N4748A	SEMICONDUCTOR DEVIC .....	2
4	PAHZZ	81349	M39003/01-2974	CAPACITOR, FIXED, ELE .....	1
5	PAHZZ	81349	M39014/02-1350	CAPACITOR, FIXED, CER .....	2
6	PAHZZ	81349	M39014/01-1351	CAPACITOR, FIXED, CER .....	3
7	PAHZZ	81349	M39003/01-3032	CAPACITOR, FIXED, ELE .....	1
8	PAHZZ	81349	M39014/02-1335	CAPACITOR, FIXED, CER .....	1
9	PAHZZ	81349	M39014/01-1336	CAPACITOR, FIXED, CER .....	1
10	PAHZZ	81349	M39003/01-3024	CAPACITOR, FIXED, ELE .....	4
11	PAHZZ	81349	M39003-01-2979	CAPACITOR, FIXED, ELE .....	1
12	PAHZZ	04222	2225-470000PF-PO M20PCT25WVDC	CAPACITOR, FIXED, CER .....	5
13	PAHZZ	81349	M39003/01-2991	CAPACITOR, FIXED, ELE .....	1
14	PAHZZ	81349	M39014/02-1208	CAPACITOR, FIXED, CER .....	1
15	PAHZZ	81349	M139014/02-1214	CAPACITOR, FIXED, CER .....	2
16	PAHZZ	80063	SH-A-838209-1	FILTER, BAND PASS-BA .....	1
17	PAHZZ	87990	755090A0084-1	CONNECTOR, RECEPTACL .....	1
18	PAHZZ	71279	94-450-1055-01-0 3-00	JACK, TIP .....	2
19	PAHZZ	81349	JAt2N2920	SEMICONDUCTOR DEVIC .....	1
20	PAHZZ	81349	JAN2N2907A	TRANSISTOR .....	1
21	PAHZZ	81349	RCR07G322JS	RESISTOR, FIXED, COMP .....	6
22	PAHZZ	81349	RCR20G472JS	RESISTOR, FIXED, COMP .....	1
23	PAHZZ	81349	RJR24FX203P	RESISTOR, VARIABLE, N .....	1
24	PAHZZ	81349	RCR07G331JS	RESISTOR, FIXED, COMP .....	4
25	PAHZZ	81349	RNC55H5360FS	RESISTOR, FIXED, FILM .....	1
26	PAHZZ	81349	RNC55H4750FS	RESISTOR, FIXED, FILM .....	1
27	PAHZZ	81349	RNC55H1331FS	RESISTOR, FIXED, FILM .....	1
28	PAHZZ	81349	RNC55H2370FS	RESISTOR, FIXED, FILM .....	1
29	PAHZZ	81349	RCR07G102JS	RESISTOR, FIXED, COMP .....	5
30	PAHZZ	81349	RNC55H3010FS	RESISTOR, FIXED, FILM .....	1
31	PAHZZ	81349	RCR07G684JS	RESISTOR, FIXED, COMP .....	1
32	PAHZZ	81349	RNC55H1962FS	RESISTOR, FIXED, FILM .....	1
33	PAHZZ	81349	RNC55H5492FS	RESISTOR, FIXED, FILM .....	1
34	PAHZZ	81349	RNC55H4122FS	RESISTOR, FIXED, FILM .....	1
35	PAHZZ	81349	RNC55HS661FS	RESISTOR, FIXED, FILM .....	1
36	PAHZZ	81349	RNC55H1332FS	RESISTOR, FIXED, FILM .....	1
37	PAHZZ	09353	7201A	SWITCH, TOGGLE .....	1
38	PAHZZ	09353	7108A	SWITCH, TOGGLE .....	1
39	PAHZZ	80063	SM-A-742456-1	TRANSFORMER, AUDIO F .....	2
40	XBHZZ	07933	RM4131T/883B	MICROCIRCUIT, LINEAR .....	4
41	PGHZZ	34148	F96LO2DMQB	MICROCIRCUIT, DIGITA .....	1
42	PAHZZ	80063	SM-A-838229-2	RESISTOR SET, MATCHE .....	1
43	PAHZZ	04655	1369215	MICROCIRCUIT, DIGITA .....	1
44	PAHZZ	80063	SM-A-838229-5	RESISTOR SET, MATCHE .....	1

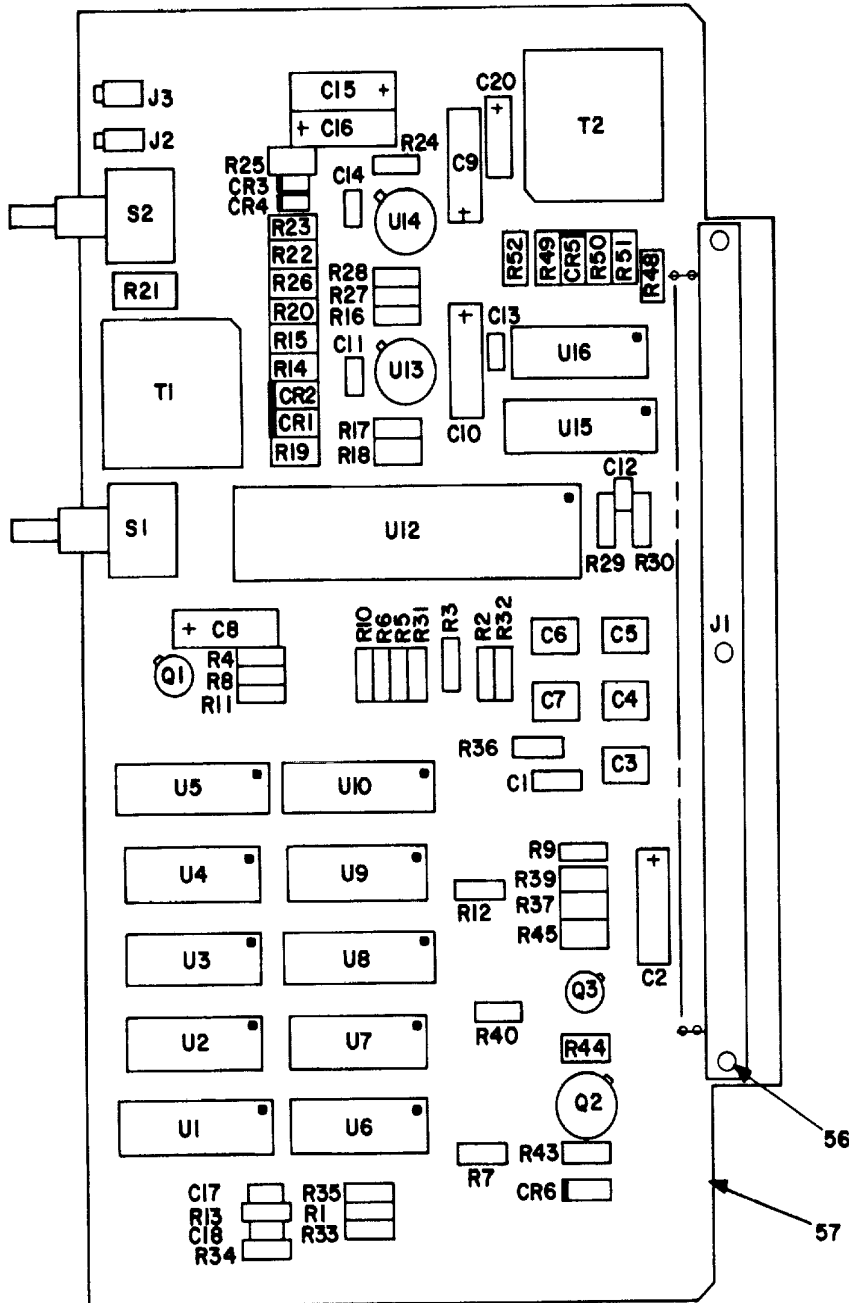


SECTION II

TM 11-5805-715-34P

(1) ITEM NO	(2) SMR CODE	(3) FSCM	(4) PART NUMBER	(5) DESCRIPTION AND USABLE ON CODES (UOC)	(6) QTY
45	PAHZZ	80063	SM-A-742443-1	MICROCIRCUIT,DIGITA .....	1
46	PAHZZ	80063	SM-A-838229-7	RESISTOR SET,MATCHE .....	1
47	PAHZZ	80063	SM-A-742435-1	MICROCIRCUIT,DIGITA .....	1
48	PAHZZ	80063	SM-A-838229-6	RESISTOR SET,MATCHE .....	1
49	PGHZZ	50464	7558687-01	MICROCIRCUIT,DIGITA .....	1
50	XAHZZ	80063	SM-B-809847	PTD WIRING BD .....	1
51	PAHZZ	96906	MS16535A81	RIVET,TUBULAR .....	3

END OF FIGURE



REF. DES.	ITEM NO.	REF. DES.	ITEM NO.
CR1,2	1	R25	31
CR3,4	2	R26	32
CR5	3	R27	19
CR6	4	R28	24
C1	5	R29,30	21
C2	6	R31,32	18
C3-7	7	R33	21
C8	8	R34,35	18
C9,10	9	R36	33
C11	10	R37	34
C12,13	11	R39	35
C14	10	R40	36
C15,16	9	R43	37
C17,18	11	R44	38
C20	12	R45	23
J1	13	R48	39
J2,3	14	R49	35
Q1	15	R50	40
Q2	16	R51	41
Q3	17	R52	30
R1	18	S1	42
R2-5	19	S2	43
R6	18	T1,2	44
R7-10	19	U1	45
R11	20	U2	46
R12	19	U3	47
R13	21	U4	48
R14	22	U5	49
R15	23	U6	50
R16,17	24	U7	51
R18	25	U8	52
R19	26	U9	51
R20	27	U10	52
R21	28	U12	53
R22	29	U13,14	54
R23	30	U15	45
R24	24	U16	55

PREFIX REFERENCE DESIGNATIONS WITH ONE OF THE FOLLOWING,  
 DEPENDING UPON ITS LOCATION IN THE UNIT.  
 A3,A7,A11,A15,A20,A24,A29,A33

EL4QC007

Figure 5. Circuit card assy, SM-E-816554.

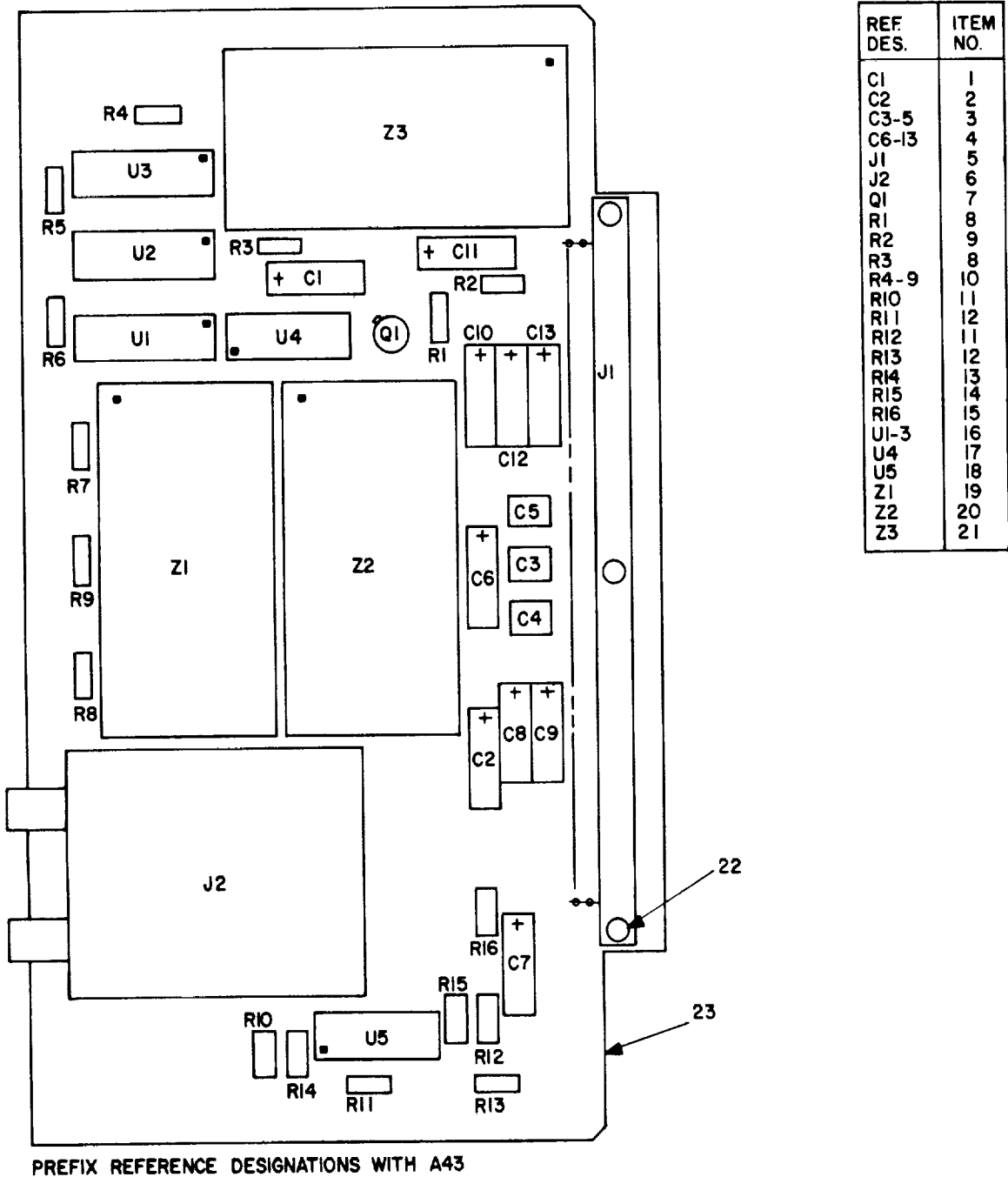
(1) ITEM NO	(2) SMR CODE	(3) FSCM	(4) PART NUMBER	(5) DESCRIPTION AND USABLE ON CODES (UOC)	(6) QTY
<b>GROUP 01. CIRCUIT CARD ASSY, SM-E-816554</b>					
<b>FIG. 5</b>					
1	PADZZ	81349	JAN1N748A	SEMICONDUCTOR DEVIC .....	2
2	PADZZ	81349	JANIN4148-1	SEMICONDUCTOR DEVIC .....	2
3	PADZZ	81349	JAN1N4372A	SEMICONDUCTOR DEVIC .....	1
4	PADZZ	81349	JANIN4126	SEMICONDUCTOR DEVIC .....	1
5	PADZZ	81349	M39014-02-1360	CAPACITOR, FIXED, CER .....	1
6	PADZZ	81349	M39003/01-2991	CAPACITOR, FIXED, ELE .....	1
7	PADZZ	04222	2225-470000PF-PO M20PCT25WVDC	CAPACITOR, FIXED, CER .....	5
8	PADZZ	81349	M39003-01-2979	CAPACITOR, FIXED, ELE .....	1
9	PADZZ	81349	M39003/01-3024	CAPACITOR, FIXED, ELE .....	4
10	PADZZ	81349	M39014/01-1348	CAPACITOR, FIXED, CER .....	2
11	PADZZ	81349	M39014/01-1572	CAPACITOR, FIXED, CER .....	4
12	PADZZ	81349	M39003/01-3076	CAPACITOR, FIXED, ELE .....	1
13	PADZZ	87990	755090A0084-1	CONNECTOR, RECEPTACL .....	1
14	PADZZ	71279	94-450-1055-01-0 3-00	JACK, TIP .....	2
15	PADZZ	81349	JAN2N2907A	TRANSISTOR .....	1
16	PADZZ	81349	JAN2N2905A	TRANSISTOR .....	1
17	PADZZ	81349	JAN2N2222A	TRANSISTOR .....	1
18	PADZZ	81349	RCR07G102JS	RESISTOR, FIXED, COMP .....	6
19	PADZZ	81349	RCR07G822JS	RESISTOR, FIXED, COMP .....	10
20	PADZZ	81349	RCR07G684JS	RESISTOR, FIXED, COMP .....	1
21	PADZZ	81349	RCR07G473JS	RESISTOR, FIXED, COMP .....	4
22	PADZZ	81349	RNC55H5620FS	RESISTOR, FIXED, FILM .....	1
23	PADZZ	81349	RNC55H1002FS	RESISTOR, FIXED, FILM .....	2
24	PADZZ	81349	RCR07G331JS	RESISTOR, FIXED, COMP .....	4
25	PADZZ	81349	RNC55H2052FS	RESISTOR, FIXED, FILM .....	1
26	PADZZ	81349	RNC55H6192FS	RESISTOR, FIXED, FILM .....	1
27	PADZZ	81349	RNC55H3482FS	RESISTOR, FIXED, FILM .....	1
28	PADZZ	81349	RJR24FX202P	RESISTOR, VARIABLE, N .....	1
29	PADZZ	81349	RNC55H1962FS	RESISTOR, FIXED, FILM .....	1
30	PADZZ	81349	RNC55H5112FS	RESISTOR, FIXED, FILM .....	2
31	PADZZ	81349	RNC55H5360FS	RESISTOR, FIXED, FILM .....	1
32	PADZZ	81349	RNC55H36R6FS	RESISTOR, FIXED, FILM .....	1
33	PADZZ	81349	RWR825131FR	RESISTOR, FIXED, WIRE .....	1
34	PADZZ	81349	RNC55H5491FS	RESISTOR, FIXED, FILM .....	1
35	PADZZ	81349	RNC55H1001FS	RESISTOR, FIXED, FILM .....	2
36	PADZZ	81349	RCR07G203JS	RESISTOR, FIXED, COMP .....	1
37	PADZZ	81349	RCR07GS20JS	RESISTOR, FIXED, COMP .....	1
38	PADZZ	81349	RNC55H1301FR	RESISTOR, FIED, FILM .....	1
39	PADZZ	81349	RNC55H2002FS	RESISTOR, FIXED, FILM .....	1
40	PADZZ	81349	RNC55H11902FS	RESISTOR, FIXED, FILM .....	1
41	PADZZ	81349	RNC55H3921FS	RESISTOR, FIXED, FILM .....	1
42	PADZZ	28009	16773891-001	SWITCH, TOGGLE .....	1
43	PADZZ	09353	7201A	SWITCH, TOGGLE .....	1
44	PADZZ	80063	SM-A-742456-1	TRANSFORMER, AUDIO F .....	2

SECTION II

TM 11-5805-715-34P

(1) ITEM NO	(2) SMR CODE	(3) FSCM	(4) PART NUMBER	(5) DESCRIPTION AND USABLE ON CODES (UOC)	(6) QTY
45	PGDZZ	34148	F96L02DMQB	MICROCIRCUIT,DIGITA .....	2
46	PGDZZ	81349	M38510/30007BCB	MICROCIRCUIT,DIGITA .....	1
47	PGDZZ	81349	M38510-30003BCB	MICROCIRCUIT,DIGITA .....	1
48	PGDZZ	50464	7558687-01	MICROCIRCUIT,DIGITA .....	1
49	PGDZZ	81349	M38510/01001BEB	MICROCIRCUIT,DIGITA .....	1
50	PGDZZ	81349	M38510/30301BCB	MICROCIRCUIT,DIGITA .....	1
51	PGDZZ	81349	M38510/30102BCB	MICROCIRCUIT,DIGITA .....	2
52	PGDZZ	81349	M38510/01306BEB	MICROCIRCUIT,DIGITA .....	2
53	PADZZ	80063	SM-A-838111-1	MICROCIRCUIT,LINEAR .....	1
54	XBDZZ	07933	RM4131T/883B	MICROCIRCUIT,LINEAR .....	2
55	PADZZ	80063	SM-A-742443-1	MICROCIRCUIT,DIGITA .....	1
56	PADZZ	96906	MS16535A81	RIVET,TUBULAR .....	3
57	XADZZ	80063	SM-B-816654	PTD WIRING BD .....	1

END OF FIGURE



REF DES.	ITEM NO.
C1	1
C2	2
C3-5	3
C6-13	4
J1	5
J2	6
Q1	7
R1	8
R2	9
R3	8
R4-9	10
R10	11
R11	12
R12	11
R13	12
R14	13
R15	14
R16	15
U1-3	16
U4	17
U5	18
Z1	19
Z2	20
Z3	21

PREFIX REFERENCE DESIGNATIONS WITH A43

EL4QC008

Figure 6. Circuit card assy, SM-E-816540.

SECTION II

TM 11-5805-715-34P

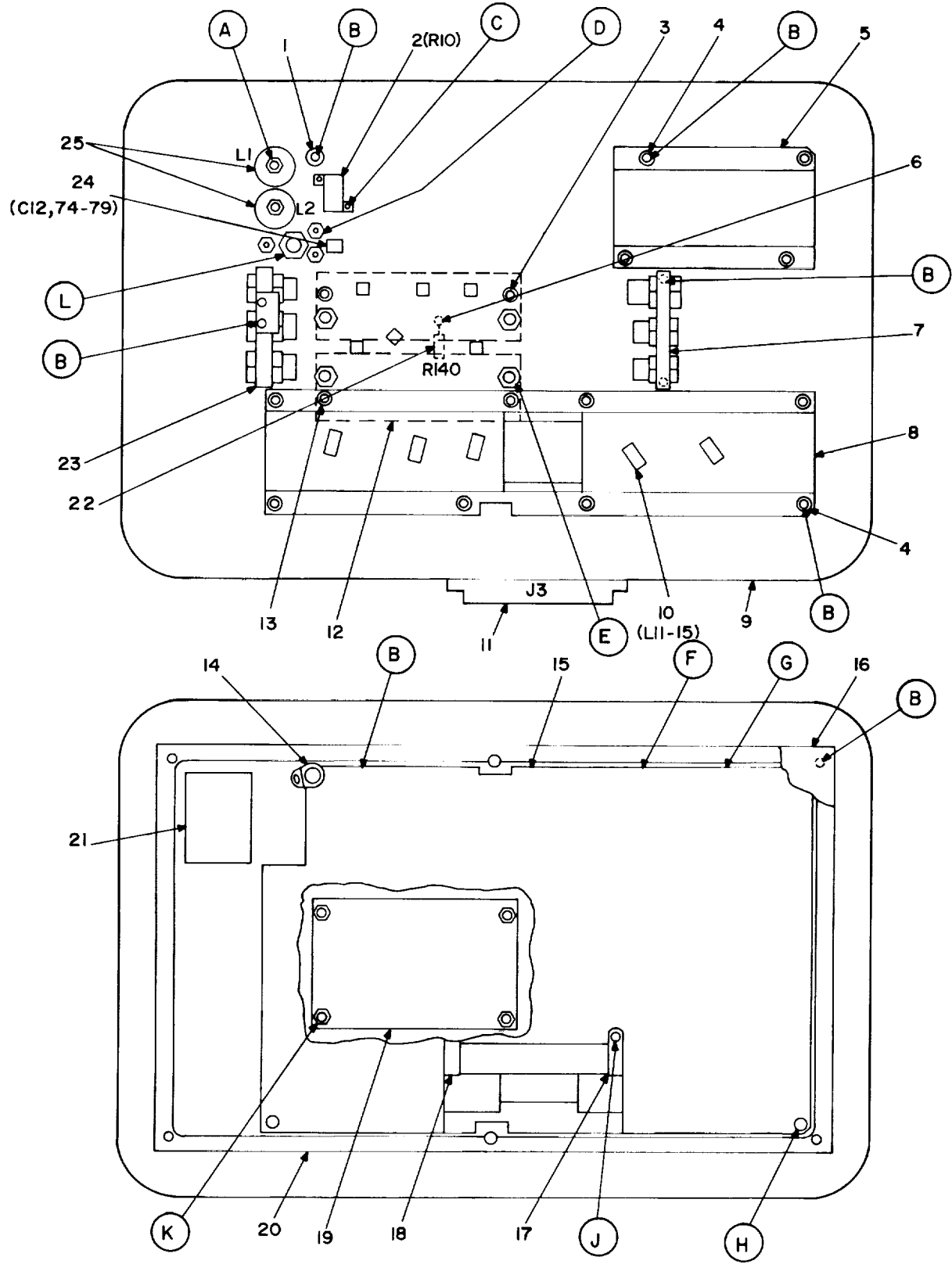
(1) ITEM NO	(2) SMR CODE	(3) FSCM	(4) PART NUMBER	(5) DESCRIPTION AND USABLE ON CODES (UOC)	(6) QTY
-------------------	--------------------	-------------	-----------------------	--	------------

GROUP 01. CIRCUIT CARD ASSY.  
SM-E-816540

FIG. 6

1	PAHZZ	81349	M39003-01-2979	CAPACITOR, FIXED, ELE .....	1
2	PAHZZ	81349	M39003/01-2991	CAPACITOR, FIXED, ELE .....	1
3	PAHZZ	04222	2225-470000PF-PO M20PCT25WVDC	CAPACITOR, FIXED, CER .....	3
4	PAHZZ	81349	M39003/01-3024	CAPACITOR, FIXED, ELE .....	8
5	PAHZZ	87990	755090A0084-1	CONNECTOR, RECEPTACL .....	1
6	PAHZZ	70674	PJ982	JACK, TELEPHONE.....	1
7	PAHZZ	81349	JAN2N2907A	TRANSISTOR .....	1
8	PAHZZ	81349	RCR07G822JS	RESISTOR, FIXED, COMP .....	2
9	PAHZZ	81349	RCR07G474JS	RESISTOR, FXD, CMPSN .....	1
10	PAHZZ	81349	RCR07G102JS	RESISTOR, FIXED, COMP .....	6
11	PAHZZ	81349	RNC55H1002FS	RESISTOR, FIXED, FILM.....	2
12	PAHZZ	81349	RCR07G682JS	RESISTOR, FIXED, COMP .....	2
13	PAHZZ	81349	RNC55H3572FS	RESISTOR, FIXED, FILM.....	1
14	PAHZZ	81349	RNC55H4992FS	RESISTOR, FIXED, FILM.....	1
15	PAHZZ	81349	RNC55H604OFS	RESISTOR, FIXED, FILM.....	1
16	PGHZZ	81349	M38510/01306BEB	MICROCIRCUIT, DIGITA .....	3
17	PGHZZ	81349	M38510/00302BCB	MICROCIRCUIT, DIGITA .....	1
18	PGHZZ	81349	M38510/10102BIC	MICROCIRCUIT, LINEAR .....	1
19	PAHZZ	32897	20A01229-26	OSCILLATOR, CRYSTAL .....	1
20	PAHZZ	32897	20A01229-15	OSCILLATOR, CRYSTAL .....	1
21	PAHZZ	80063	SM-A-838277-1	OSCILLATOR, NONCRYST .....	1
22	PAHZZ	96906	MS16535A81	RIVET, TUBULAR .....	3
23	XAHZZ	80063	SM-B-816640	PTD WIRING BD .....	1

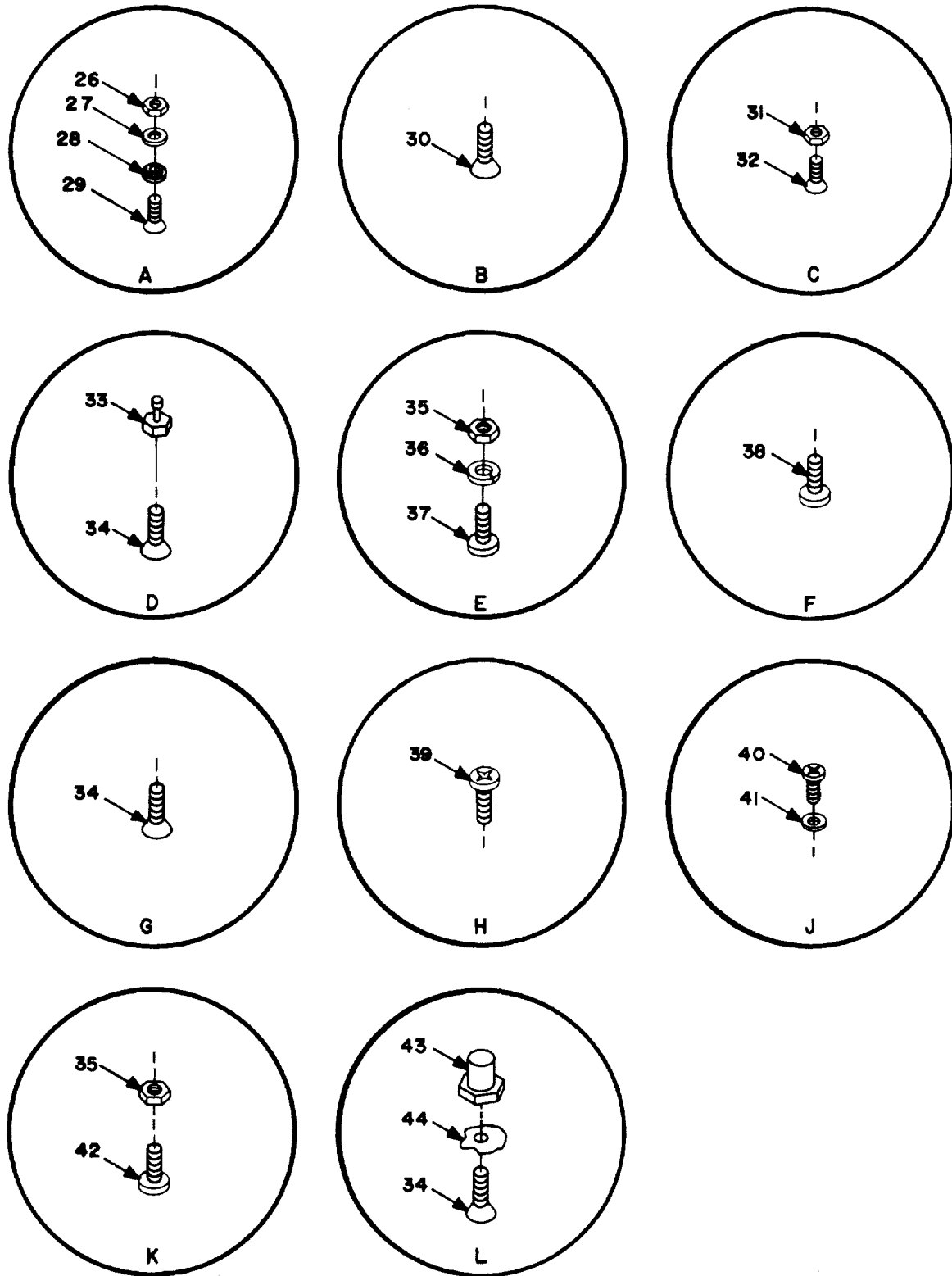
END OF FIGURE



SEE SHEET 2 OF 2 FOR ENCIRCLED DETAILS.  
 PREFIX REFERENCE DESIGNATIONS WITH PSI.

EL4QC009

Figure 7. Low voltage power supply, SM-D-817249-2 (Sheet 1 of 2).



EL4QC010

Figure 7. Low voltage power supply, SM-D-817249-2 (Sheet 2 of 2).



SECTION II

TM 11-5805-715-34P

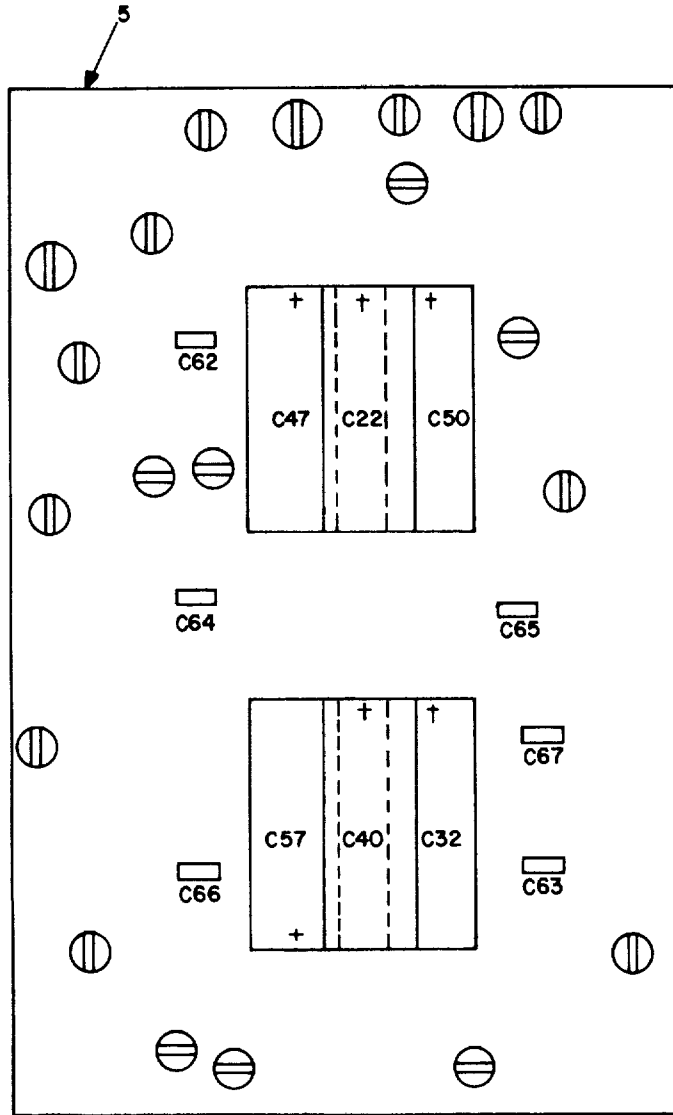
(1) ITEM NO	(2) SMR CODE	(3) FSCM	(4) PART NUMBER	(5) DESCRIPTION AND USABLE ON CODES (UOC)	(6) QTY
-------------------	--------------------	-------------	-----------------------	--	------------

GROUP 02. LOW VOLTAGE POWER  
SUPPLY, SM-D-817249-2.

FIG. 7

1	XBDZZ	11352	1694-632-A-6	STANDOFF .....	1
2	PADZZ	81349	RER60F15ROFR	RESISTOR, FIXED, WIRE .....	1
3	XBDZZ	11352	SC1758/5/16	SPACER .....	2
4	XBDZZ	11352	1692-632-A-6	STANDOFF .....	3
5	XADDD	11352	70i21-302	SNITCHER HEATSINK .....	1
6	PADZZ	96906	M577068-2	TERMINAL, LUG .....	2
7	XADDD	11352	70421-307	DIODE HEATSINK ASSY.....	1
8	XADDD	11352	70421-303	SERIES PASS ASSY .....	1
9	XBDZZ	11352	D70421-800	BASEPLATE.....	1
10	XBDZZ	22320	F1832-1-06	FERRITE BEAD.....	5
11	PADZZ	81349	r155302/27-30	CONNECTOR, RECEPTACL .....	1
12	PADZZ	81349	M55164/5-41TB-6	TERMINAL BOARD.....	2
13	XBDZZ	11352	SC1758/3/16	SPACER .....	2
14	XBDZZ	11352	SC1580/6C	TERMINAL, LUG .....	1
15	XADDD	11352	70421-305	CKT CD, POWER SUPPLY .....	1
16	XADDD	11352	70421-301	COVER ASSEMBLY.....	1
17	XBDZZ	11352	AV70421-811	CLIP, CONNECTOR .....	2
18	XBDZZ	04729	1316-I04-F12-256	SPACER .....	2
19	XBDDD	11352	70421-304	TERMINAL BOARD ASSY.....	1
20	XBDZZ	11352	C70421-810	GASKET .....	1
21	XBDZZ	11352	AV70421-807	INSULATOR .....	1
22	PADZZ	81349	RNC55H6490FR	RESISTOR, FIXED, FILM.....	1
23	XADDD	11352	70421-306	SCR HEATSINK ASSY .....	1
24	PADZZ	81349	K05BX104K	CAPACITOR, FXD, CER.....	7
25	PADZZ	11352	AV70421-459	INDUCTOR .....	2
26	XBDZZ	11352	SC1589/2	NUT, HEX .....	2
27	XBDZZ	11352	SC2067/62-002	WASHER, MICA .....	2
28	XBDZZ	11352	SC1890/16	WASHER, SHOULDER .....	2
29	XBDZZ	11352	SC1930/X256-08	SCREW, MACHINE .....	2
30	PADZZ	96906	MS24693-C25	SCREW, MACHINE .....	17
31	XBDZZ	11352	SC1578/256	NUT, HEX .....	2
32	XBDZZ	11352	SC1849/X256-03	SCREW, MACHINE .....	2
33	XBDZZ	11352	SC2332	TERMINAL, STUD.....	3
34	PADZZ	96906	1524693-C1	SCREW, MACHINE .....	5
35	XBDZZ	11352	SC1825/632	NUT, HEX .....	8
36	XBDZZ	11352	SC1579/6	WASHER, LOCK.....	8
37	XBDZZ	11352	SC1817/X632-10	SCREW, MACHINE .....	4
38	XBDZZ	11352	SC1817/X632-4	SCREW, MACHINE .....	4
39	XBDZZ	11352	SC1817X632-05	SCREW, MACHINE .....	4
40	XBDZZ	11352	SC1817/X256-06	SCREW, MACHINE .....	2
41	XBDZZ	11352	SC1822/804	WASHER, FLAT .....	1
42	XBDZZ	11352	SC1817/X632-16	SCREW, MACHINE .....	1
44	XBDZZ	11352	SC2170-6	HEATSINK, TRANSISTOR .....	1

END OF FIGURE



REF. DES.	ITEM NO.
C22	1
C32	2
C40	3
C47	3
C50	2
C57	2
C62-67	4

PREFIX REFERENCE DESIGNATIONS WITH PSI .

EL4QC011

Figure 8. Terminal board assy, 70421-304.

SECTION II

TM 11-5805-715-34P

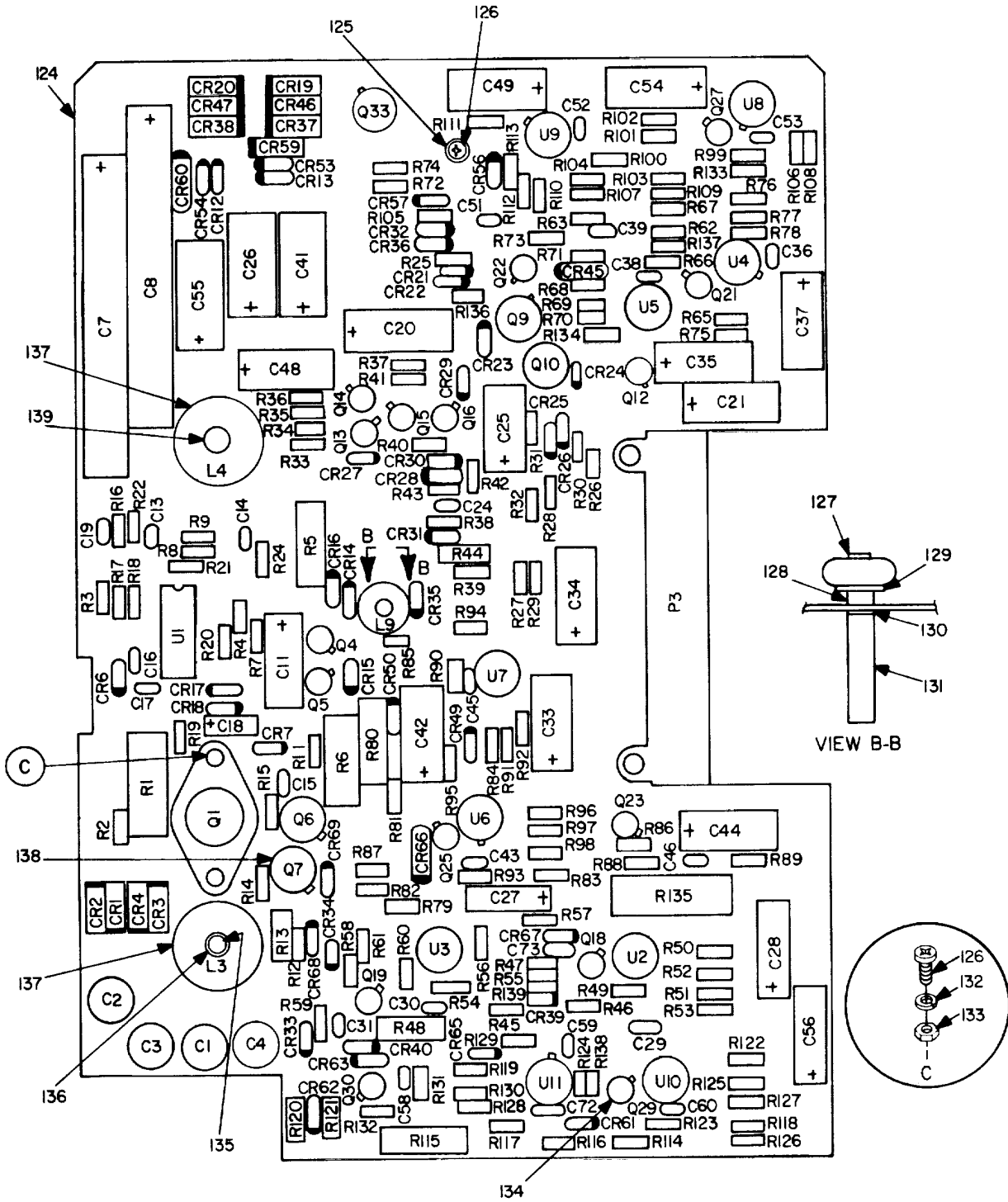
(1) ITEM NO	(2) SMR CODE	(3) FSCM	(4) PART NUMBER	(5) DESCRIPTION AND USABLE ON CODES (UOC)	(6) QTY
-------------------	--------------------	-------------	-----------------------	--	------------

GROUP 02. TERMINAL BOARD ASSY,  
70421-304

FIG. 8

1	PADZZ	81349	M39003/01-3138	CAPACITOR, FIXED, ELE .....	1
2	PADZZ	81349	M39003/01-3026	CAPACITOR, FIXED, ELE .....	3
3	PADZZ	81349	M39003/01-2983	CAPACITOR, FIXED, ELE .....	2
4	PADZZ	81349	M39014/01-1593	CAPACITOR, FIXED, CER .....	6
5	XADZZ	11352	D70421-126	PRINTED WIRING BD .....	1

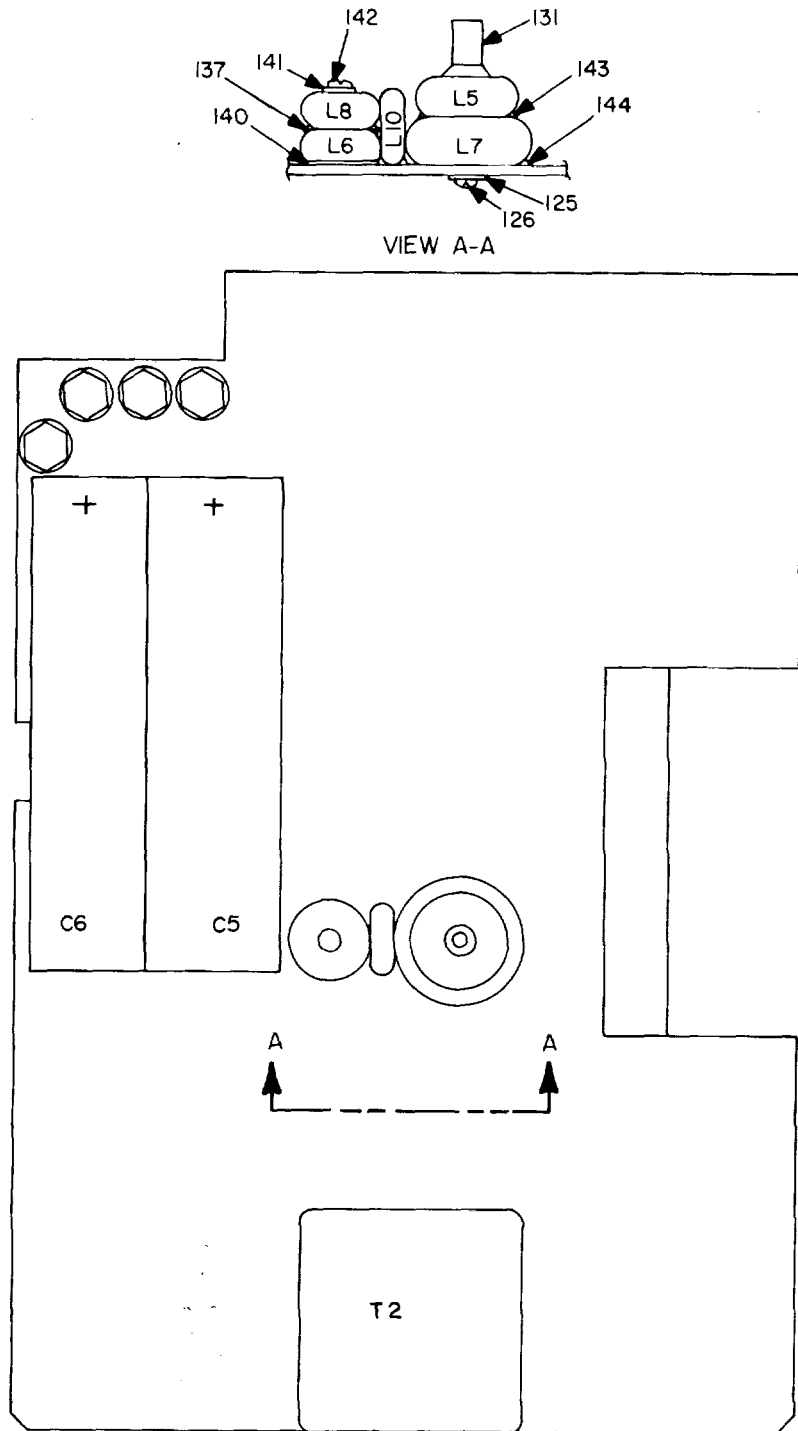
END OF FIGURE



PREFIX REFERENCE DESIGNATIONS WITH PSI

EL4QC012

Figure 9. Circuit card assy, 70421-305 (Sheet 1 of 3).



EL4QC013

Figure 9. Circuit card assy, 70421-305 (Sheet 2 of 3).

REF. DES.	ITEM NO.	REF. DES.	ITEM NO.	REF. DES.	ITEM NO.	REF. DES.	ITEM NO.
CR1-4	1	C43	29	R24	69	R85	95
CR6	2	C44	32	R25	70	R86	96
CR7	3	C45	30	R26,27	71	R87	103
CR12-16	4	C46	29	R28	72	R88	52
CR17,18	3	C48,49	28	R29	73	R89	88
CR19,20	5	C51	29	R30	74	R90	91
CR21,22	6	C52,53	30	R31	75	R91	100
CR23	7	C54	28	R32	64	R92	101
CR24-27	6	C55	26	R33	76	R93	87
CR28	8	C56	28	R34	77	R94	109
CR29	9	C58	29	R35	78	R95	110
CR30	8	C59	30	R36	79	R96	64
CR31	10	C60	29	R37	80	R97	104
CR32-36	6	C72	34	R38	81	R98	107
CR37,38	5	C73	29	R39	67	R99	71
CR39	6	L3	35	R40	79	R100	111
CR40	11	L4	36	R41	82	R101	71
CR45	11	L5	37	R42	79	R102	112
CR46,47	5	L6	38	R43	83	R103	71
CR49	11	L7	39	R44	84	R104	113
CR50	10	L8	40	R45,46	71	R105	95
CR53,54	4	L9	38	R47	85	R106	87
CR56	11	L10	41	R48	86	R107	114
CR57	9	P3	42	R49	87	R108	82
CR59,60	5	Q1	43	R50	88	R109	115
CR61	6	Q4,5	44	R51	89	R110	93
CR62,63	12	Q6,7	45	R52	64	R111	91
CR65	11	Q9	46	R53	90	R112	116
CR66	5	Q10	47	R54	91	R113	88
CR67	13	Q12-14	48	R55	92	R114	117
CR68,69	3	Q15	49	R56	93	R115	86
C1-4	14	Q16	48	R57	94	R116	71
C5,6	15	Q18,19	48	R58	88	R117	85
C7,8	16	Q21-23	48	R59	95	R118	90
C11	17	Q25	48	R60	96	R119	92
C13	18	Q27	48	R61	52	R120	95
C14,15	19	Q29,30	48	R62	71	R121	96
C16	20	Q33	50	R63	97	R122	110
C17	19	R1	51	R65	98	R123	87
C18	21	R2	52	R66	99	R124	118
C19	19	R3	53	R67	87	R125	88
C20	22	R4	54	R68	91	R126	89
C21	23	R5,6	55	R69	100	R127	64
C24	24	R7	54	R70	101	R128	93
C25	25	R8	56	R71	88	R129	91
C26	26	R9	57	R72	52	R130	94
C27	27	R11	58	R73	95	R131	88
C28	28	R12	59	R74	102	R132	52
C29	29	R13	60	R75	103	R133	64
C30	30	R14	61	R76	64	R134	108
C31	29	R15	62	R77	104	R135	119
C33,34	31	R16	63	R78	105	R136	54
C35	32	R17	64	R79	71	R137	108
C36	30	R18	65	R80	86	R138,139	120
C37	28	R19	66	R81	106	T2	121
C38	30	R20	67	R82	107	U1	122
C39	29	R21,22	68	R83,84	108	U2-11	123
C41	33						
C42	28						

EL4QC014

Figure 9. Circuit card assy, 70421-305 (Sheet 3 of 3).

## SECTION II

TM 11-5805-715-34P

(1) ITEM NO	(2) SMR CODE	(3) FSCM	(4) PART NUMBER	(5) DESCRIPTION AND USABLE ON CODES (UOC)	(6) QTY
-------------------	--------------------	-------------	-----------------------	--	------------

**GROUP 02. CIRCUIT CARD ASSY,  
70421-305**

**FIG. 9**

1	PADZZ	81349	JANTX1N5552	SEMICONDUCTOR DEVIC .....	4
2	PADZZ	81349	JANTX1N4473	SEMICONDUCTOR DEVIC .....	1
3	PADZZ	81349	JANTX1N5614	SEMICONDUCTOR DEVIC .....	5
4	PADZZ	81349	JANTX1H5615	SEMICONDUCTOR DEVIC .....	7
5	PADZZ	81349	JANTX1N5416	SEMICONDUCTOR DEVIC .....	9
6	PADZZ	81349	JANTX1N4148-1	SEMICONDUCTOR DEVIC .....	13
7	PADZZ	81349	JANTX1N825	SEMICONDUCTOR DEVIC .....	2
9	PADZZ	81349	JANTX1N759A	SEMICONDUCTOR DEVIC .....	2
10	PADZZ	81349	JANTX1N750A	SEMICONDUCTOR DEVIC .....	2
11	PADZZ	81349	JANTX1N756A	SEMICONDUCTOR DEVIC .....	5
12	PADZZ	81349	JANTXIN755A	SEMICONDUCTOR DEVIC .....	2
13	PADZZ	81349	JANTX1N4966	SEMICONDUCTOR DEVIC .....	1
14	PADZZ	33095	SC19030-154	CAPACITOR .....	4
15	PCDZZ	81349	M39018/03-0791	CAPACITOR, FIXED, ELE .....	2
16	PADZZ	81349	M39018/01-1018M	CAPACITOR, FXD, CER .....	2
17	PADZZ	81349	M39003/01-3091	CAPACITOR, FIXED, ELE .....	1
18	PADZZ	81349	M39014/01-1566	CAPACITOR, FXD, CER .....	1
19	PADZZ	81349	M39014/01-1593	CAPACITOR, FIXED, CER .....	4
20	PADZZ	81349	CCR06CG562GR	CAPACITOR, FXD, CER .....	1
21	PADZZ	81349	M39003/01-2988	CAPACITOR, FIXED, ELE .....	1
22	PADZZ	81349	M39003/01-3141	CAPACITOR, FIXED, ELE .....	1
23	PADZZ	81349	M39003/01-3138	CAPACITOR, FIXED, ELE .....	1
24	PADZZ	81349	M39014/2-1236	CAPACITOR, FIXED, CER .....	1
25	PADZZ	81349	M39003-01-2994	CAPACITOR, FIXED, ELE .....	1
26	PADZZ	81349	M39003/01-3100	CAPACITOR, FIXED, ELE .....	2
27	PADZZ	81349	M39006/21-0154	CAPACITOR, FIXED, ELE .....	1
28	PADZZ	81349	M39003/01-3026	CAPACITOR, FIXED, ELE .....	7
29	PADZZ	81349	M39014/01-1575	CAPACITOR, FXD, CER .....	9
30	PADZZ	81349	M39014/01-1357	CAPACITOR, FIXED, CER .....	7
31	PADZZ	81349	M39003/01-3021	CAPACITOR, FIXED, ELE .....	2
32	PADZZ	81349	M39003/01-2983	CAPACITOR, FIXED, ELE .....	2
33	PADZZ	81349	M39003/01-3032	CAPACITOR, FIXED, ELE .....	1
34	PADZZ	81349	M39014/01-1353	CAPACITOR, FXD, CER .....	1
35	PADZZ	11352	AV70421-452	REACTOR .....	1
36	PADZZ	11352	AV70421-453	REACTOR .....	1
37	PADZZ	11352	AV70421-454	REACTOR .....	1
38	PADZZ	11352	AV70421-455	REACTOR .....	2
39	PADZZ	11352	AV70421-456	INDUCTOR .....	1
40	PADZZ	11352	AV70421-457	INDUCTOR .....	1
41	PADZZ	11352	AV70421-458	INDUCTOR .....	1
42	PADZZ	81349	M55302/26-08	CONNECTOR, RECEPTACL .....	1
43	PADZZ	81349	JANTX2N3585	TRANSISTOR .....	1
44	PADZZ	81349	JANTX2N3057A	TRANSISTOR .....	2
45	PADZZ	81349	JANTX2N5416	TRANSISTOR .....	2
46	PADZZ	81349	JANTX2N2905A	TRANSISTOR .....	1
47	PADZZ	81349	JANTX2N3499	TRANSISTOR .....	1

## SECTION II

TM 11-5805-715-34P

(1) ITEM NO	(2) SMR CODE	(3) FSCM	(4) PART NUMBER	(5) DESCRIPTION AND USABLE ON CODES (UOC)	(6) QTY
48	PADZZ	81349	JANTX2N2222A	TRANSISTOR .....	13
49	PADZZ	81349	JANTX2N2369A	TRANSISTOR .....	1
50	PADZZ	81349	JANTX2N2323	SEMICONDUCTOR DEVIC .....	1
51	PADZZ	81349	RCR42G623JS	RESISTOR, FIXED, COMP .....	1
52	PADZZ	81349	RCR07G102JS	RESISTOR, FIXED, COMP .....	5
53	PADZZ	81349	RWR81SR10OFR	RESISTOR, FIXED, WIRE .....	1
54	PADZZ	81349	RCR07G123JS	RESISTOR, FIXED, COMP .....	3
55	PADZZ	81349	RCR32G392JS	RESISTOR, FIXED, COMP .....	2
56	PADZZ	81349	RNC55H3742FS	RESISTOR, FIXED, FILM .....	1
57	PADZZ	81349	RNC55H3092FS	RESISTOR, FIXED, FILM .....	1
58	PADZZ	81349	RCR07G273JS	RESISTOR, FIXED, COMP .....	1
59	PADZZ	81349	RCR07G364JS	RESISTOR, FIXED, COMP .....	1
60	PADZZ	81349	RCR20G124JS	RESISTOR, FIXED, COMP .....	1
61	PADZZ	81349	RCR07G183JS	RESISTOR, FIXED, COMP .....	1
62	PADZZ	81349	RCR07G432JS	RESISTOR, FIXED, COMP .....	1
64	PADZZ	81349	RNC55HFSVFR	RESISTOR, FIXED, FILM .....	7
65	PADZZ	81349	RNC55H5111FS	RESISTOR, FIXED, FILM .....	1
66	PADZZ	81349	RCR07G153JS	RESISTOR, FIXED, COMP .....	1
67	PADZZ	81349	RCR07G563JS	RESISTOR, FIXED, COMP .....	2
68	PADZZ	81349	RNC55H7151FS	RESISTOR, FIXED, FILM .....	2
69	PADZZ	81349	RCR07G100JS	RESISTOR, FIXED, COMP .....	1
70	PADZZ	81349	RCR07G151JS	RESISTOR, FIXED, COMP .....	.1
71	PADZZ	81349	RNC55H1001FS	RESISTOR, FIXED, FILM .....	10
72	PADZZ	81349	RWR81S1ROOFS	RESISTOR, FIXED, WIRE .....	1
73	PADZZ	81349	RNC55H2372FS	RESISTOR, FIXED, FILM .....	1
74	PADZZ	81349	RNC55H1002FS	RESISTOR, FIXED, FILM .....	1
75	PADZZ	81349	RNC55H2431FR	RESISTOR, FIXED, FILM .....	1
76	PADZZ	81349	RCR07G431JS	RESISTOR, FIXED, COMP .....	1
77	PADZZ	81349	RCR07G154JS	RESISTOR, FIXED, COPMP .....	1
78	PADZZ	81349	RCR07G393JS	RESISTOR, FIXED, COMP .....	1
79	PADZZ	81349	RCR07G682JS	RESISTOR, FIXED, COMP .....	3
80	PADZZ	16845	1000-483-23	RESISTOR, FIXED .....	1
81	PADZZ	81349	RCR07G333JS	RESISTOR, FIXED, COMP .....	1
82	PADZZ	81349	RCR07G122JS	RESISTOR, FIXED, COMP .....	2
83	PADZZ	81349	RNC55H3012FS	RESISTOR, FIXED, FILM .....	1
84	PADZZ	81349	RCR20G122JS	RESISTOR, FIXED, COMP .....	1
85	PADZZ	81349	RNC55H1822FS	RESISTOR, FIXED, FILM .....	2
86	PADZZ	81349	RWR89SR806FR	RESISTOR, FIXED, WIRE .....	3
87	PADZZ	81349	RCR07G160JS	RESISTOR, FIXED, COMP .....	5
88	PADZZ	81349	RCR07G152JS	RESISTOR, FIXED, COMP .....	7
89	PADZZ	81349	RNC55H2611FS	RESISTOR, FIXED, FILM .....	2
90	PADZZ	81349	RNC55H3161FS	RESISTOR, FIXED, FILM .....	2
91	PADZZ	81349	CMR05C180JPDR	CAPACITOR, FIXED, MIC .....	5
92	PADZZ	81349	RNC55H9091FS	RESISTOR, FIXED, FILM .....	2
93	PADZZ	81349	RCR07G362JS	RESISTOR, FIXED, COMP .....	3
94	PADZZ	81349	RNC55H6041FS	RESISTOR, FIXED, FILM .....	2
95	PADZZ	81349	RCR07G272JS	RESISTOR, FIXED, COMP .....	5
96	PADZZ	16845	1000-409-16	TRANSISTOR .....	3
97	PADZZ	81349	RNC55H8060FS	RESISTOR, FIXED, FILM .....	1
98	PADZZ	81349	RNC55H4021FS	RESISTOR, FIXED, FILM .....	1
99	PADZZ	81349	RCR07G391JS	RESISTOR, FIXED, COMP .....	1



## SECTION II

TM 11-5805-715-34P

(1) ITEM NO	(2) SMR CODE	(3) FSCM	(4) PART NUMBER	(5) DESCRIPTION AND USABLE ON CODES (UOC)	(6) QTY
100	PADZZ	81349	RNC55H2371FS	RESISTOR, FIXED, FILM.....	2
101	PADZZ	81349	RNC55H10I52FS	RESISTOR, FIXED, FILM.....	2
102	PADZZ	81349	RCR07G330JS	RESISTOR, FIXED, COMP.....	1
103	PADZZ	81349	RCR07G512JS	RESISTOR, FIXED, COMP.....	2
104	PADZZ	81349	RNC55H1651FS	RESISTOR, FIXED, FILM.....	2
105	PADZZ	81349	RNC55H4421FS	RESISTOR, FIXED, FILM.....	1
106	PADZZ	81349	RNC55H7500FS	RESISTOR, FIXED, FILM.....	1
107	PADZZ	81349	RNC55H4321FS	RESISTOR, FIXED, FILM.....	2
108	PADZZ	81349	RNC55H1301FR	RESISTOR, FIXED, FILM.....	4
109	PADZZ	81349	RCR07G821JS	RESISTOR, FIXED, COMP.....	1
110	PADZZ	81349	RCR07G182JS	RESISTOR, FIXED, COMP.....	2
111	PADZZ	81349	RWR81S4RO2FS	RESISTOR, FIXED, WIRE.....	1
112	PADZZ	81349	RNC55H1622FS	RESISTOR, FIXED, FILM.....	1
113	PADZZ	81349	RNC55H6491FS	RESISTOR, FIXED, FILM.....	1
114	PADZZ	81349	RCR07G270JS	RESISTOR, FIXED, COMP.....	1
115	PADZZ	81349	RNC55H1501FS	RESISTOR, FIXED, FILM.....	1
116	PADZZ	81349	RNC55H8061FS	RESISTOR, FIXED, FILM.....	1
117	PADZZ	81349	RNC55H6810FR	RESISTOR, FIXED, FILM.....	1
118	PADZZ	81349	RCR07G202JS	RESISTOR, FIXED, COMP.....	1
119	PADZZ	81349	RWR74S1210FS	RESISTOR, FIXED, WIRE.....	1
120	PADZZ	81349	RCR07G223JS	RESISTOR, FIXED, COMP.....	2
121	PADZZ	11352	70421-308	TRANSFORMER ASSY.....	1
122	PADZZ	34333	SG1524J/883B	MICROCIRCUIT, LINEAR.....	1
123	PGDZZ	27014	LM723D883B	MICROCIRCUIT, LINEAR.....	10
124	XADZZ	11352	D70421-125	PRINTED WIRING BD.....	1
125	XBDZZ	11352	SC1928/15-050	WASHER, NYLON.....	2
126	XBDZZ	11352	SC1817/X632-05	SCREW, MACHINE.....	8
127	XBDZZ	11352	SC1849/X632-12	SCREW, MACHINE.....	1
128	XBDZZ	11352	SC1758/1/8A6	SPACER.....	1
129	XBDZZ	11352	SC1900/1	WASHER, FLAT.....	1
130	XBDZZ	11352	SC1894/2-032	WASHER, FLAT.....	1
131	XBDZZ	11352	1694-632-A-6	STANDOFF.....	2
132	XBDZZ	11352	SC1579/6	WASHER, LOCK.....	3
133	XBDZZ	11352	SC1825/632	NUT, HEX.....	2
134	XBDZZ	11352	SC1333	TRANSIPAD.....	16
135	XBDZZ	11352	SC2139/X256N08	SCREW, MACHINE.....	1
136	XBDZZ	11352	SC1890/49	WASHER, SHOULDER.....	2
137	XBDZZ	11352	SC1569/0	WASHER, MYLAR.....	3
138	XBDZZ	11352	SC1332	TRANSIPAD.....	5
139	XBDZZ	11352	SC2139/X440N08	SCREW, MACHINE.....	1
140	XBDZZ	11352	SC1890/69	WASHER, SHOULDER.....	2
141	XBDZZ	11352	SC1928/41-040	WASHER, NYLON.....	1
142	XBDZZ	11352	SC1817/X440-12	SCREW, MACHINE.....	1
143	XBDZZ	11352	AV70421-814	INSULATOR.....	1
144	XBDZZ	11352	SC2067/72-005	WASHER, MICA.....	1

END OF FIGURE

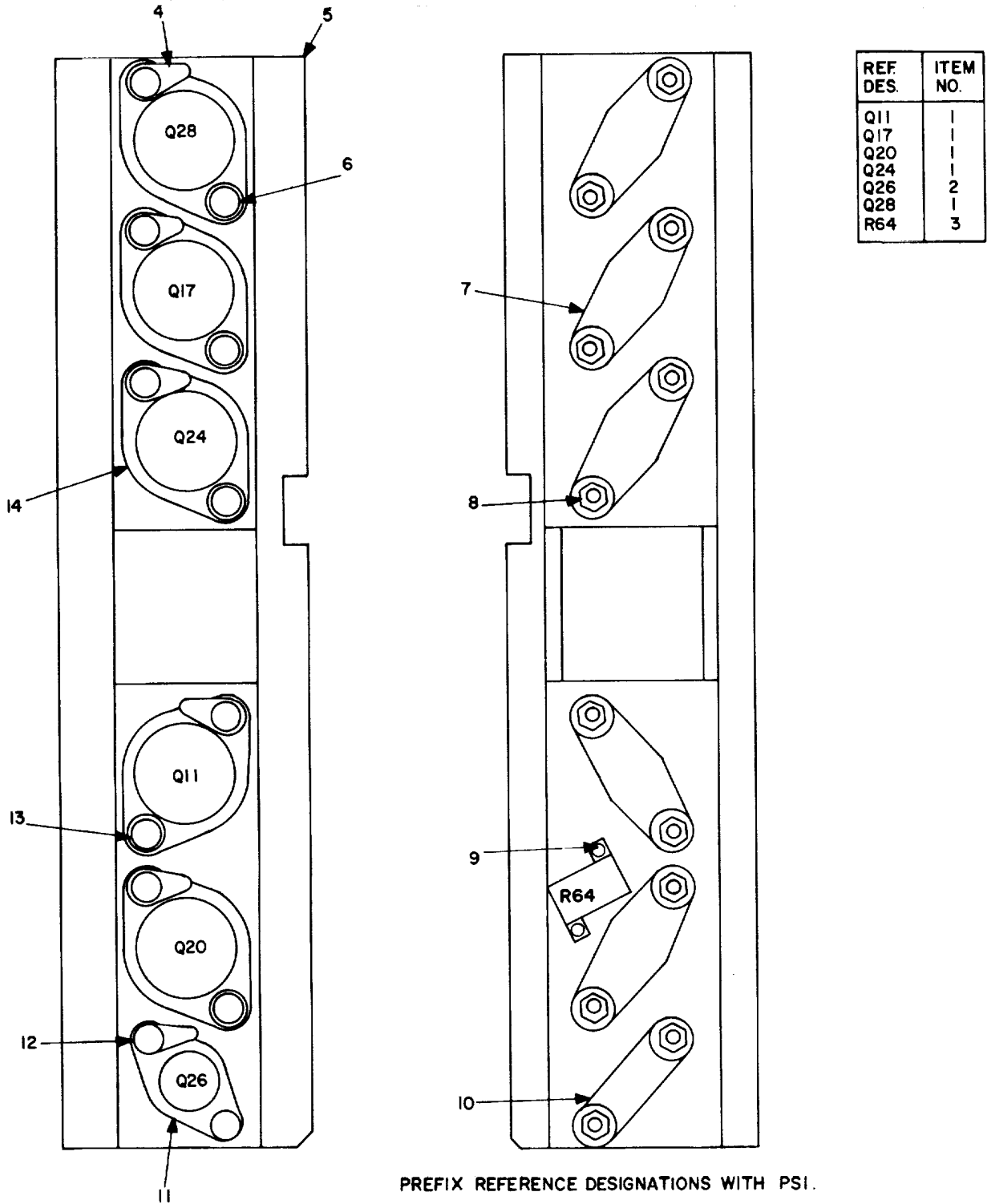


Figure 10. Series pass assy, 70421-303.

EL4QC015

SECTION II

TM 11-5805-715-34P

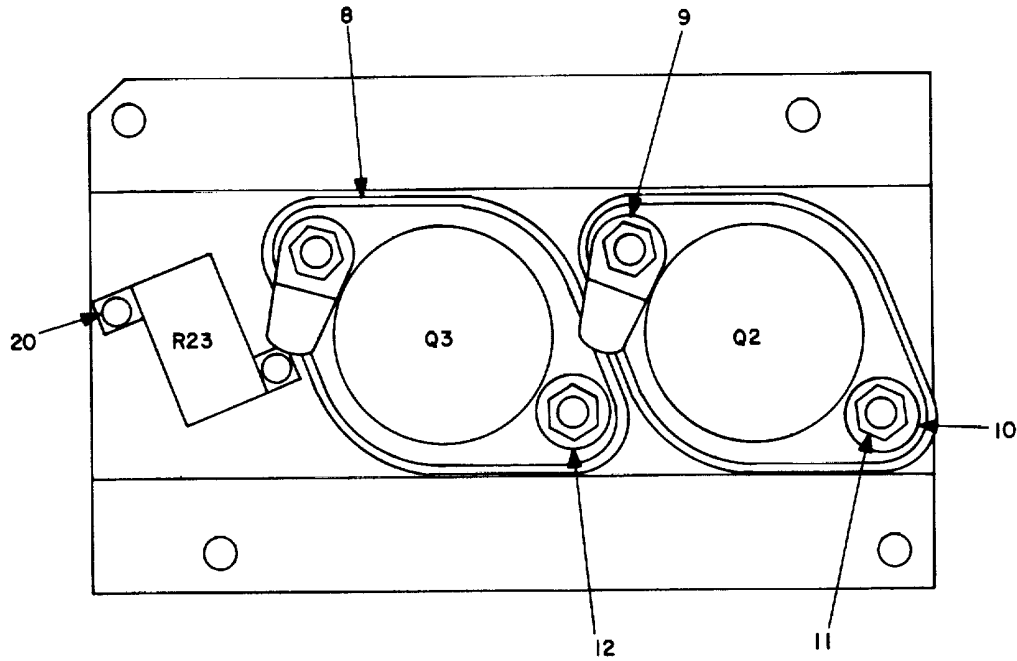
(1) ITEM NO	(2) SMR CODE	(3) FSCM	(4) PART NUMBER	(5) DESCRIPTION AND USABLE ON CODES (UOC)	(6) QTY
-------------------	--------------------	-------------	-----------------------	--	------------

GROUP 02. SERIES PASS ASSY,  
70421-303

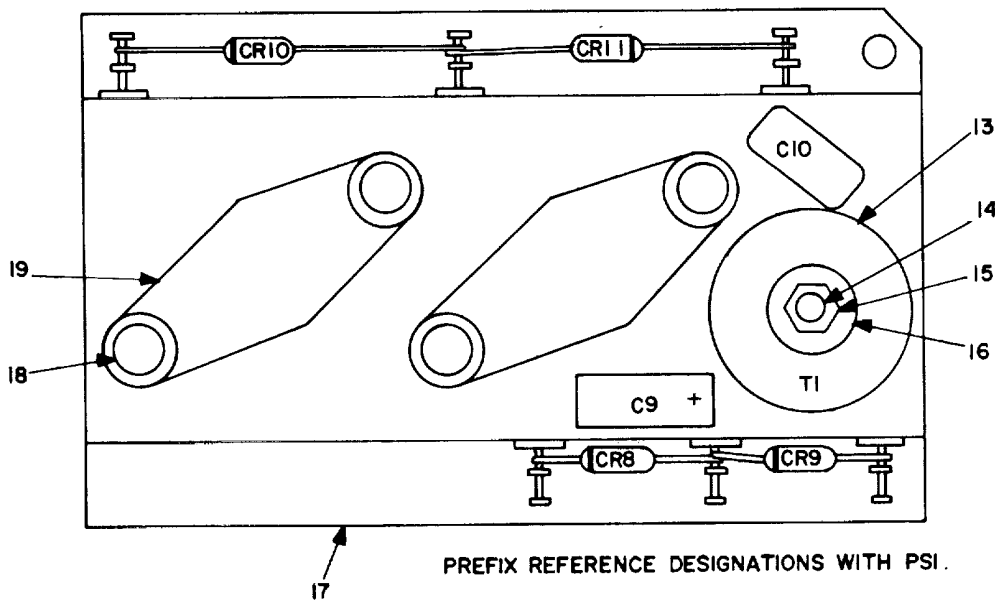
FIG. 10

1	PADZZ	81349	JANTX2N6385	TRANSISTOR .....	5
2	PADZZ	81349	JANTX2N5665	TRANSISTOR .....	1
3	PADZZ	81349	RER60FR133FR	RESISTOR, FIXED, WIRE .....	1
4	XBDZZ	11352	SC1580/6C	TERMINAL, LUG .....	6
5	XBDZZ	11352	D70421-803	HEATSINK .....	1
6	XBDZZ	11352	SC1817/X632-07	SCREW, MACHINE .....	12
7	XBDZZ	11352	SC2283-1	PAD, TRANSISTOR .....	5
8	XBDZZ	11352	SC1825/632	NUT, HEX .....	12
9	XBDZZ	11352	SC1817/X256-03	SCREW, MACHINE .....	2
10	XBDZZ	11352	SC2284-1	PAD, TRANSISTOR .....	1
11	XBDZZ	11352	SC1335	WASHER, MICA .....	1
12	XBDZZ	11352	SC1579/6	WASHER, LOCK .....	6
13	XBDZZ	11352	SC1822/6	WASHER, FLAT .....	12
14	XBDZZ	11352	SC1885	WASHER, MICA .....	5

END OF FIGURE



REF DES.	ITEM NO.
CR8,9	1
CR10,11	2
C9	3
C10	4
Q2,3	5
R23	6
T1	7



PREFIX REFERENCE DESIGNATIONS WITH PSI.

EL4QC016

Figure 11. SWITCHER, HEATSINK, 70421-302.

SECTION II

TM 11-5805-715-34P

(1) ITEM NO	(2) SMR CODE	(3) FSCM	(4) PART NUMBER	(5) DESCRIPTION AND USABLE ON CODES (UOC)	(6) QTY
-------------------	--------------------	-------------	-----------------------	--	------------

GROUP 02. SWITCH, HEATSINK  
70421-302

FIG. 11

1	PADZZ	81349	JANTX1N5614	SEMICONDUCTOR DEVIC .....	2
2	PADZZ	81349	JANTX1N5619	SEMICONDUCTOR DEVIC .....	2
3	PADZZ	81349	M39003/01-2966	CAPACITOR, FIXED, ELE .....	1
4	PADZZ	81349	CMR05F271GPDR	CAPACITOR, FIXED, MIC .....	1
5	PADZZ	81349	JANTX2N3902	TRANSISTOR .....	2
6	PADZZ	81349	RER60F5110FR	RESISTOR, FIXED, WIRE .....	1
7	PADZZ	11352	B70421-450	TRANSFORMER, POWER .....	1
8	XBDZZ	11352	SC1885	WASHER, MICA .....	2
9	XBDZZ	11352	SC1580/6C	TERMINAL, LUG .....	2
10	XBDZZ	11352	SC1822/6	WASHER, FLAT .....	4
11	XBDZZ	11352	SC1825/6-32	NUT, HEX .....	4
12	XBDZZ	11352	SC1579/6	WASHER, LOCK .....	2
13	XBDZZ	11352	SC2067/70-2	WASHER, MICA .....	1
14	XBDZZ	11352	SC1849/X440-07	SCREW, MACHINE .....	1
15	XBDZZ	11352	SC1825/440	NUT, HEX .....	1
16	XBDZZ	11352	SC1890/70	WASHER, SHOULDER .....	1
17	XBDZZ	11352	C70421-802	HEATSINK .....	1
18	XBDZZ	11352	SC1817/X632-07	SCREW, MACHINE .....	4
19	XBDZZ	11352	SC2283-1	PAD, TRANSISTOR .....	2
20	XBDZZ	11352	SC1817/X256-03	SCREW, MACHINE .....	2

END OF FIGURE

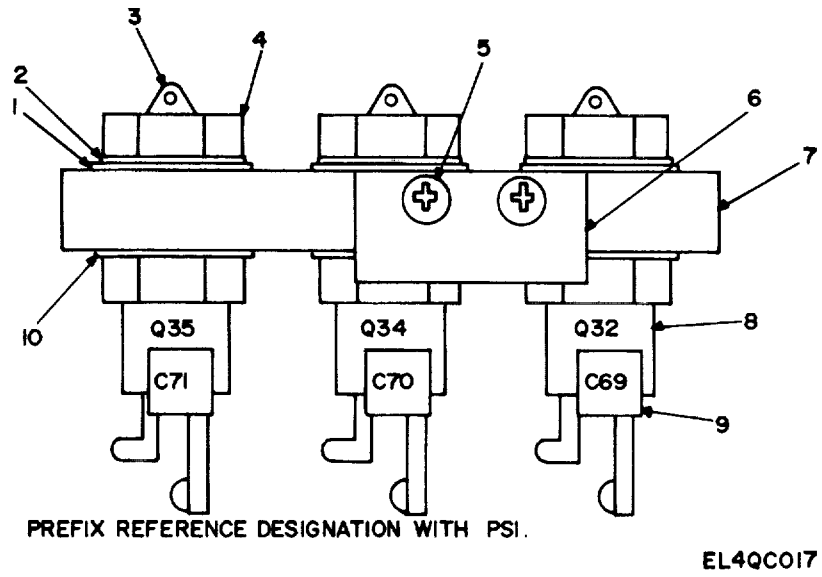


Figure 12. Scr heatsink assy, 70421-306.

SECTION II

TM 11-5805-715-34P

(1) ITEM NO	(2) SMR CODE	(3) FSCM	(4) PART NUMBER	(5) DESCRIPTION AND USABLE ON CODES (UOC)	(6) QTY
-------------------	--------------------	-------------	-----------------------	--	------------

GROUP 02. SCR HEATSINK ASSY,  
70421-306

FIG. 12

1	XBDZZ	11352	SC2177/65-050	WASHER,BUSHING .....	12
2	XBDZZ	11352	SC1579/10	WASHER,LOCK .....	3
3	XBDZZ	11352	SC2230/1	TERMINAL,LUG .....	3
4	XBDZZ	11352	SC1825/1032	NUT,HEX .....	3
5	XBDZZ	11352	SC1817/X256-03	SCREW,MACHINE .....	2
6	XBDZZ	11352	AV70421-815	SUPPORT PLATE .....	1
7	XBDZZ	11352	C70421-805	HEATSINK .....	1
8	PADZZ	81349	JANTX2N1771A	SEMICONDUCTOR DEVIC .....	3
9	PADZZ	81349	M39014/01-1593	CAPACITOR,FIXED,CER .....	3
10	XBDZZ	11352	SC2067/62-002	WASHER,MICA .....	6

END OF FIGURE

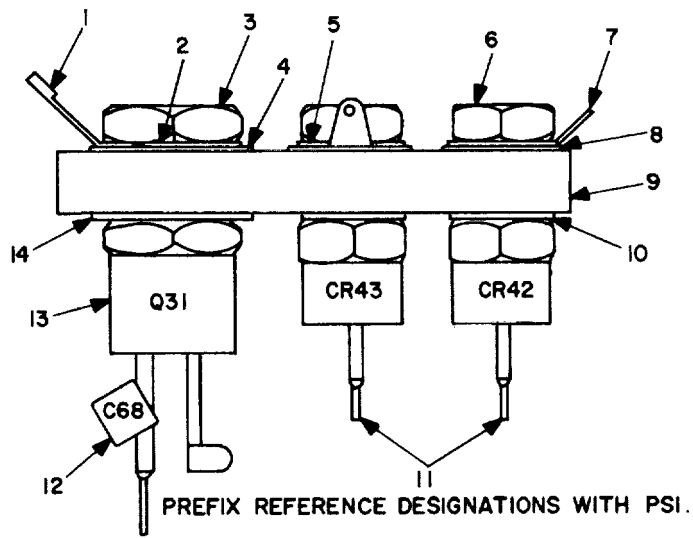


Figure 13. Diode heatsink assy, 70421-307.



SECTION II

TM 11-5805-715-34P

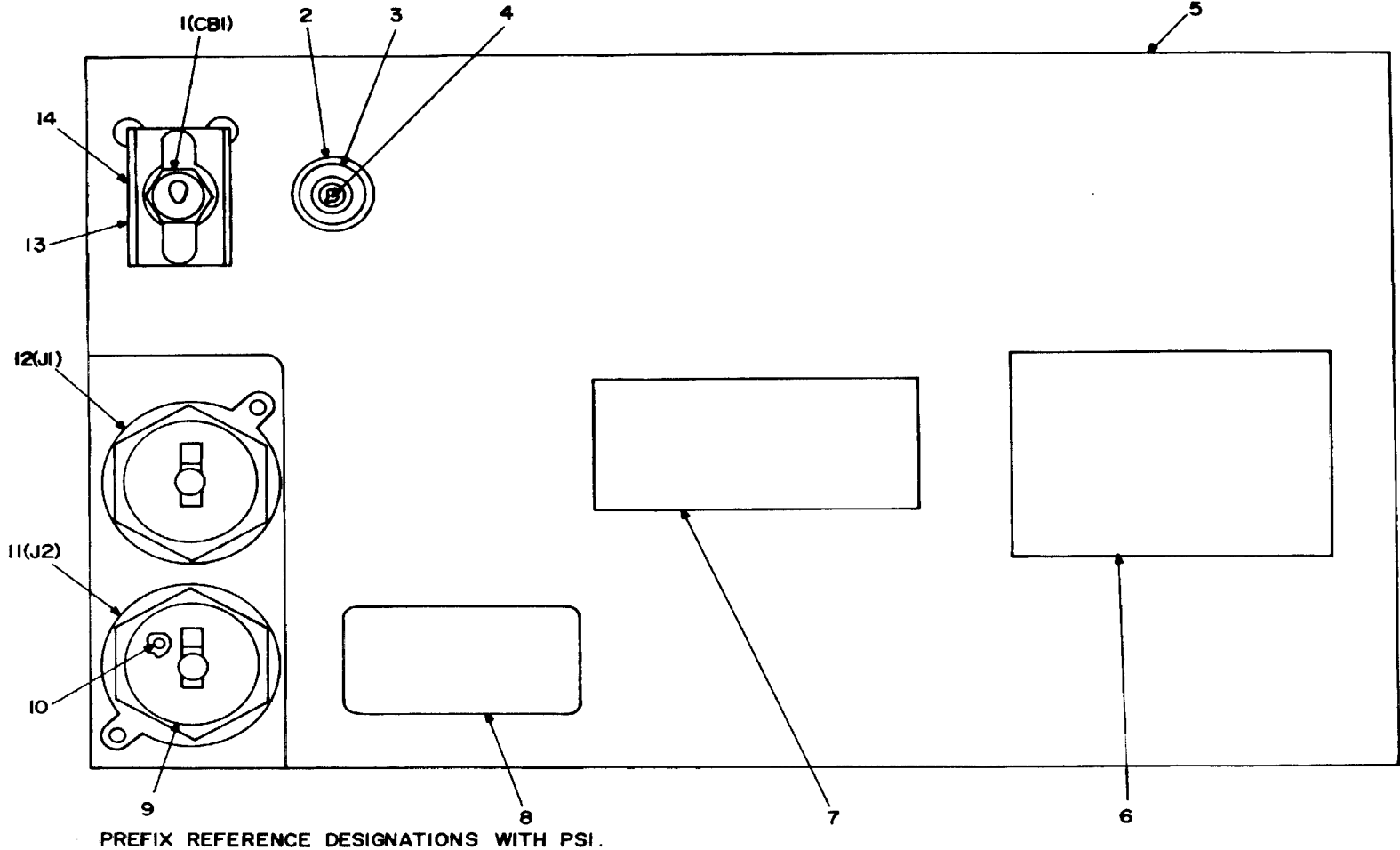
(1) ITEM NO	(2) SMR CODE	(3) FSCM	(4) PART NUMBER	(5) DESCRIPTION AND USABLE ON CODES (UOC)	(6) QTY
-------------------	--------------------	-------------	-----------------------	--	------------

GROUP 02. DIODE HEATSINK ASSY  
70421-307

FIG. 13

1	XBDZZ	11352	SC2229/25	TERMINAL,LUG .....	1
2	XBDZZ	11352	SC1579/1/4	WASHER,LOCK .....	1
3	XBDZZ	11352	SC1578/1/428	NUT,HEX .....	1
4	XBDZZ	11352	SC2177/80-050	WASHER,BUSHING .....	4
5	XBDZZ	11352	SC1579/10	WASHER,LOCK .....	2
6	XBDZZ	11352	SC1825/1032	NUT,HEX .....	2
7	XBDZZ	11352	SC2230/1	TERMINAL,LUG .....	2
8	XBDZZ	11352	SC2177/65-050	WASHER,BUSHING .....	8
9	XBDZZ	11352	C70421-804	HEATSINK .....	1
10	XBDZZ	11352	SC2067/62-002	WASHER,MICA .....	4
11	PADZZ	81349	JANTX1N3890	SEMICONDUCTOR DEVIC .....	2
12	PADZZ	81349	M39014/01-1593	CAPACITOR,FIXED,CER .....	1
13	PADZZ	81349	JANTX2N682	SEMICONDUCTOR DEVIC .....	1
14	XBDZZ	11352	SC2067/70-2	WASHER,MICA .....	2

END OF FIGURE



PREFIX REFERENCE DESIGNATIONS WITH PSI.

EL4QC019

Figure 14. Cover assy, 70421-301.

SECTION II

TM 11-5805-715-34P

(1) ITEM NO	(2) SMR CODE	(3) FSCM	(4) PART NUMBER	(5) DESCRIPTION AND USABLE ON CODES (UOC)	(6) QTY
-------------------	--------------------	-------------	-----------------------	--	------------

GROUP 02. COVER ASSY 70421-301

FIG. 14

1	PADZZ	81541	AP12-1-7-2F-1751	CIRCUIT BREAKER .....	1
2	PADZZ	81349	LH89/1	LIGHT,INDICATOR .....	1
3	PAOZZ	81349	LC36GD2	LENS,LIGHT .....	1
4	PAOZZ	96906	MS25237-327	LAMP,INCANDESCENT .....	1
5	XBDZZ	11352	D70421-801	COVER .....	1
6	XBDZZ	11352	AV70421-226	IDENTIFICATION .....	1
7	XBDZZ	11352	AV70421-227	PLATE,IDENT .....	1
8	XBDZZ	11352	B70421-225	DECAL,CAUTION .....	1
9	PADZZ	11352	10-101964-143	COVER,ELECTRICAL CO .....	2
10	PADZZ	96906	MS3187-16	PLUG,END SEAL,ELECT .....	4
11	PADZZ	96906	MS3124E14-5S	CONNECTOR,RECEPTACL .....	1
12	PADZZ	96906	MS3124E-14-5P	CONNECTOR,RECEPTACL .....	1
13	XBDZZ	11352	SC1849/X632-04	SCREW,MACHINE .....	2
14	XBDZZ	11352	B70421-806	SWITCH,GUARD .....	1

END OF FIGURE

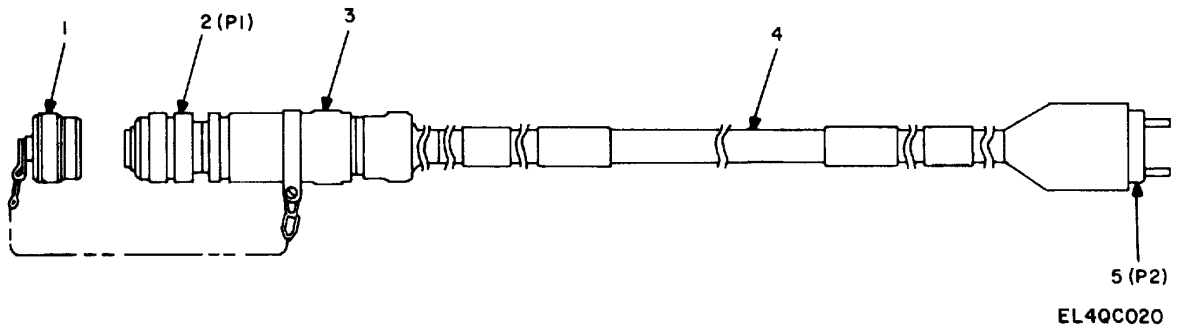


Figure 15. Cable power, SM-D-812377-1.

SECTION II

TM 11-5805-715-34P

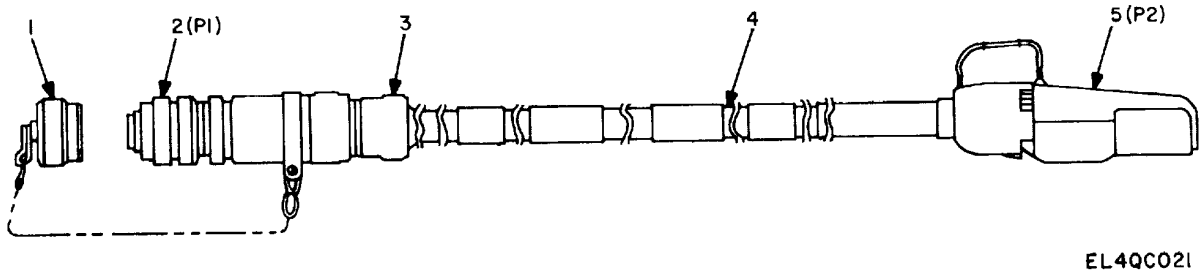
(1) ITEM NO	(2) SMR CODE	(3) FSCM	(4) PART NUMBER	(5) DESCRIPTION AND USABLE ON CODES (UOC)	(6) QTY
-------------------	--------------------	-------------	-----------------------	--	------------

GROUP 03. CABLE POWER SM-D-812377-1

FIG. 15

1	PAFZZ	96906	MS3180-14C	COVER,ELECTRICAL CO.....	1
2	PAFZZ	96906	MS3126F14-5S	CONNECTOR,PLUG,ELEC.....	1
3	PAFZZ	07418	S1617-1208-2.0C-34	ADAPTER.....	1
4	PAFZZ	81349	CO-03HDF(3/16)0435	CABLE,POWER,ELEC.....	26
5	XBFZZ	74545	8215-C	CONNECTOR,PLUG,ELEC.....	1

END OF FIGURE



EL4QC021

Figure 16. Cable assy, electrical, SM-D-811745.

SECTION II

TM 11-5805-683-34P-1

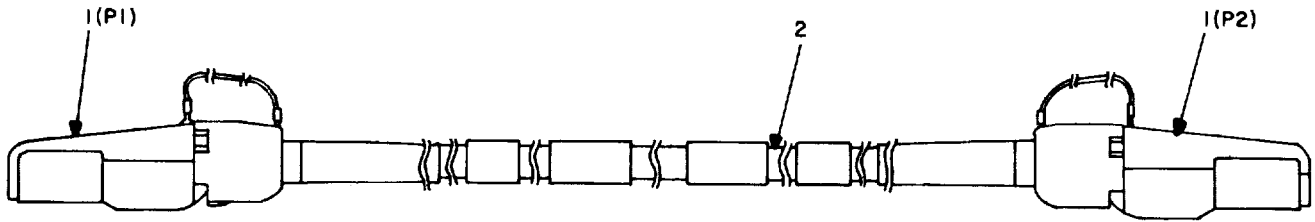
(1) ITEM NO	(2) SMR CODE	(3) FSCM	(4) PART NUMBER	(5) DESCRIPTION AND USABLE ON CODES (UOC)	(6) QTY
-------------------	--------------------	-------------	-----------------------	--	------------

GROUP 03. CABLE ASSY,ELECTRICAL  
SM-D-811745

FIG. 16

1	XBFZZ	07418	S1400-23C5.5-PA-34	CAP-PLUG,PROTECTIVE .....	1
2	PAFZZ	96906	MS27467T23B53S	CONNECTOR,PLUG,ELEC .....	1
3	PAFZZ	07418	51613-2510-2.5C-34	ADAPTER,CABLE CLAMP.....	1
4	PAFZZ	81349	WM-130A/G	CABLE,TELEPHONE.....	26
5	PAFZZ	81349	M55074/1-01	CONNECTOR,PLUG,ELEC .....	1

END OF FIGURE



EL4QC022

Figure 17. Cable assy, signal, SM-D-811235.



SECTION II

TM 11-5805-683-34P-1

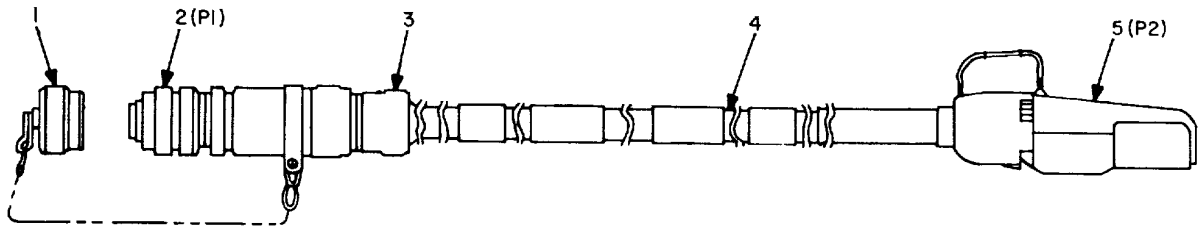
(1) ITEM NO	(2) SMR CODE	(3) FSCM	(4) PART NUMBER	(5) DESCRIPTION AND USABLE ON CODES (UOC)	(6) QTY
-------------------	--------------------	-------------	-----------------------	--	------------

GROUP 03. CABLE ASSY SINGAL  
SM-D-811235

FIG. 17

1	PAFZZ	81349	M55074/1-01	CONNECTOR,PLUG,ELEC .....	2
2	PAFZZ	81349	WM-130A/G	CABLE,TELEPHONE .....	26

END OF FIGURE



EL4QC023

Figure 18. Cable assy, signal, SM-D-811746.

SECTION II

TM 11-5805-683-34P-1

(1) ITEM NO	(2) SMR CODE	(3) FSCM	(4) PART NUMBER	(5) DESCRIPTION AND USABLE ON CODES (UOC)	(6) QTY
-------------------	--------------------	-------------	-----------------------	--	------------

**GROUP 03 CABLE ASSY SIGNAL  
SM-D-811746**

**FIG. 18**

1	XBFZZ	07418	S1400-23C5.5-PA-34	CAP-PLUG,PROTECTIVE .....	1
2	PAFZZ	96906	MS27467T23B53-SA	CONNECTOR,PLUG,ELEC.....	1
3	PAFZZ	07418	51613-2510-2.5C-34	ADAPTER,CABLE CLAMP.....	1
4	PAFZZ	81349	WM-130A/G	CABLE,TELEPHONE.....	26
5	PAFZZ	81349	M55074/1-01	CONNECTOR,PLUG,ELEC .....	1

END OF FIGURE

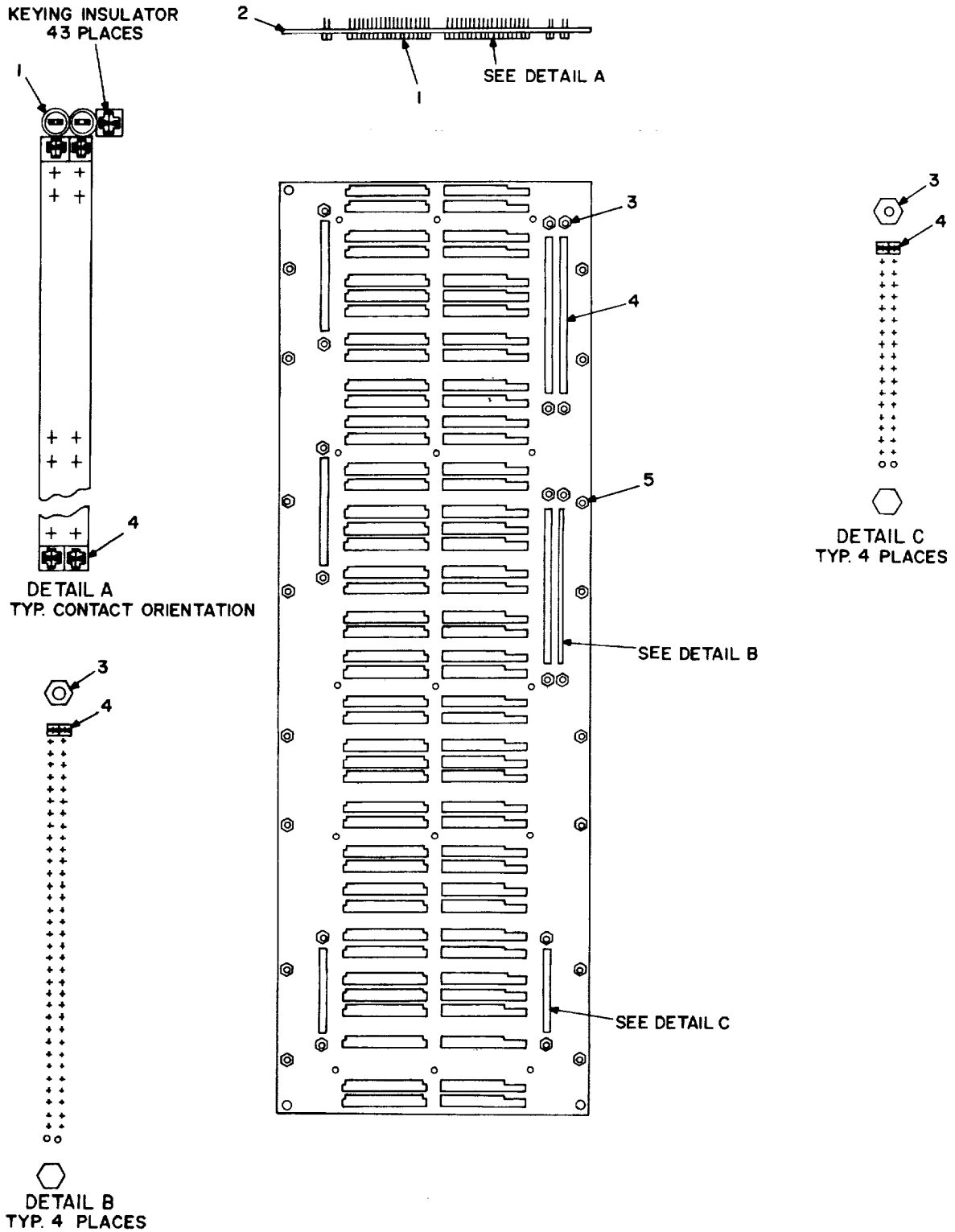


Figure 19. Connector plate assy, SM-D-814619.

SECTION II

TM 11-5805-683-34P-1

(1) ITEM NO	(2) SMR CODE	(3) FSCM	(4) PART NUMBER	(5) DESCRIPTION AND USABLE ON CODES (UOC)	(6) QTY
-------------------	--------------------	-------------	-----------------------	--	------------

**GROUP 04 CONNECTOR PLATE ASSY  
SM-D-814619**

**FIG. 19**

1	PAFZZ	80063	SM-A-742210-9	CONTACT ASSEMBLY,EL.....	85
2	XBFZZ	80063	SM-D-814619-1	PLATE .....	1
3	PAFZZ	46384	SOS-6440-22	NUT,SLEEVE.....	16
4	PAFZZ	80063	SM-A-742210-6	CONTACT ASSEMBLY,EL.....	618
5	PAFZZ	96906	MS3214-7	NUT,PLAIN,CLINCH .....	16

END OF FIGURE

## NATIONAL STOCK NUMBER AND PART NUMBER INDEX

## NATIONAL STOCK NUMBER INDEX

STOCK NUMBER	FIGURE NO.	ITEM NO.	STOCK NUMBER	FIGURE NO.	ITEM NO.
5905-00-003-5782	5	41	5905-00-110-7620	5	18
5905-00-003-7717	6	15		6	10
5905-00-005-2880	5	30		9	52
5905-00-005-2902	9	83	5905-00-110-7622	6	12
5905-00-006-5571	9	90		9	79
5910-00-007-2001	11	3	5905-00-111-1679	9	103
5910-00-007-3974	4	13	5905-00-111-4727	9	955
	5	6	5905-00-112-1392	4	36
	6	2	5905-00-113-4860	9	114
5910-00-007-7471	8	3	5910-00-113-5276	4	6
	9	32	5910-00-113-5286	9	24
5330-00-009-3948	2	8	5910-00-113-5465	5	5
5910-00-010-8159	9	21	5910-00-113-5471	4	9
5910-00-010-8184	9	22	5910-00-113-5499	4	5
5910-00-010-8666	9	30	5910-00-113-9716	4	8
5910-00-010-8717	8	4	5905-00-114-0708	9	118
	9	19	5905-00-114-0710	4	24
	12	9		5	24
	13	12	5905-00-114-5339	9	77
5962-00-024-0653	6	17	5905-00-114-5343	9	110
5905-00-028-1790	5	32	5905-00-115-3560	9	61
5305-00-054-5648	2	16	5905-00-115-8055	9	78
5305-00-054-5649	1	21	5905-00-116-8555	9	66
5305-00-054-6653	1	24	5905-00-116-8556	9	120
5305-00-059-3660	1	18	5905-00-118-4559	9	81
	2	10	5905-00-119-3504	9	58
5340-00-060-5957	2	3	5905-00-119-8768	9	109
5910-00-098-9242	9	18	5905-00-119-8811	9	70
5961-00-104-1400	9	8	5905-00-121-6327	9	107
5905-00-104-8335	9	60	59C5-00-121-9932	9	99
5905-00-104-8357	4	31	5910-00-124-0659	9	29
	5	20	5905-00-126-6699	9	87
5905-00-104-8358	4	21	5910-00-127-2407	4	14
	5	19	5905-00-131-1255	9	82
	6	8	5905-00-135-3974	9	76
5905-00-104-8363	5	37	5905-00-135-6045	9	102
5905-00-104-8369	9	93	5905-00-136-8431	9	62
5961-00-104-8378	4	19	5905-00-137-0573	9	57
5961-00-105-5733	9	12	5310-00-137-3397	19	5
5961-00-105-5734	9	11	5905-00-137-4815	9	101
5961-00-105-5736	9	9	5905-00-138-1241	9	51
5905-00-105-7767	6	9	5905-00-138-3361	7	22
5905-00-106-1278	9	54	5905-00-138-3376	5	35
5905-00-106-1356	9	88		9	71
5905-00-106-1357	9	67	5905-00-138-7399	9	65
5905-00-106-9356	5	36	5905-00-139-1922	4	30
5905-00-107-0656	9	69	5905-00-139-1925	9	113
5910-00-107-7418	5	11	5905-00-139-1928	9	106
5961-00-108-7007	9	10	5905-00-141-0592	9	84
5905-00-110-7620	4	29	5905-00-141-0595	4	22

## NATIONAL STOCK NUMBER AND PART NUMBER INDEX

## NATIONAL STOCK NUMBER INDEX

STOCK NUMBER	FIGURE NO.	ITEM NO.	STOCK NUMBER	FIGURE NO.	ITEM NO.
5905-00-141-0717	5	21	5961-00-272-8477	9	43
5905-00-141-0741	9	59	5962-00-274-0200	6	18
5910-00-144-4381	4	10	5905-00-302-4161	4	27
	5	9	5905-00-305-5225	5	38
	6	4		9	108
5910-00-144-4383	8	2	5905-00-306-0647	9	94
	9	28	5910-00-318-2161	4	12
5905-00-150-0477	4	33		5	7
6210-00-151-5276	14	3		6	3
5905-00-152-8441	4	28	5961-00-350-8249	9	7
5910-00-154-0547	4	7	5961-00-350-8303	13	11
	9	33	5905-00-356-4199	9	117
6240-00-155-7836	14	4	5935-00-361-8559	1	15
5961-00-156-0618	9	3	5961-00-361-9482	5	4
	11	1	5962-00-369-7641	5	52
5910-00-156-5999	5	10		6	16
5910-00-156-7293	9	25		5	42
5910-00-164-2978	8	1	5930-00-375-9176	9	112
	9	23	5905-00-401-7433	9	105
5905-00-169-3419	4	25	5905-00-401-7436	9	100
	5	31	5905-00-402-1194	9	22
5910-00-171-0015	4	15	5905-00-402-6917	5	1
6210-00-176-4928	14	2	5961-00-403-3298	9	116
5905-00-186-2210	9	92	5905-00-412-0763	5	39
5905-00-189-0735	9	86	5905-00-412-4048	9	123
5961-00-189-2087	10	2	5962-00-417-1080	9	49
5910-00-192-7180	4	11	5961-00-420-3668	9	44
	5	8	5961-00-422-3485	9	4
	6	1	5961-00-426-9613	9	49
5961-00-195-4094	12	8	5962-00-428-7809	5	13
5935-00-193-4007	14	10	5905-00-431-5157	9	97
5910-00-199-5335	9	34	5905-00-431-5160	4	35
5905-00-219-8638	5	34	5905-00-432-0331	5	25
5905-00-223-2741	5	23	5905-00-432-6364	5	26
	6	11	5905-00-451-7410	13	13
	9	74	5961-00-459-4005	11	2
5961-00-230-7998	11	5	5961-00-476-7855	9	73
5S61-00-233-4851	9	50	5905-00-479-9946	9	68
5905-00-236-0513	5	27	5905-00-480-5195	9	115
5905-00-236-0895	6	14	5905-00-480-5196	9	89
5910-00-236-8740	4	4	5905-00-481-1321	9	98
5910-00-236-8745	9	31	5905-00-481-8456	9	104
5910-00-236-8767	9	26	5905-00-484-7887	4	26
5910-00-236-8773	9	17	5905-00-492-2173	5	12
5935-00-243-1912	9	85	5910-00-495-0042	16	4
5905-00-247-8728	9	55	6145-00-577-8480	17	2
5905-00-256-5030	9	63		18	4
5905-00-256-8893	4	32	5935-00-577-8846	1	33
	5	29		16	5
5961-00-272-8340	9	13		17	1

## NATIONAL STOCK NUMBER AND PART NUMBER INDEX

## NATIONAL STOCK NUMBER INDEX

STOCK NUMBER	FIGURE NO.	ITEM NO.	STOCK NUMBER	FIGURE NO.	ITEM NO.
5935-00-577-8846	18	5	5961-01-038-6918	4	2
5961-00-584-4527	9	6		5	2
5310-00-595-6211	1	23	5962-01-039-6395	5	50
5935-00-628-9293	9	42	5910-01-043-6895	9	91
5935-00-628-9297	7	11	5935-01-043-6929	18	2
5961-00-650-9638	9	5	5910-01-044-8558	11	4
5905-00-721-0036	4	34	5970-01-045-6746	1	28
5905-00-721-3681	5	40	5970-01-045-6747	1	20
5310-00-757-8629	19	3	5905-01-046-0479	9	72
5905-00-758-4782	9	56	5962-01-058-1539	5	51
5961-00-758-5815	9	47	5962-01-067-1163	4	49
5935-00-761-3885	15	2		5	48
5305-00-763-6009	7	34	5961-01-068-1006	9	2
5310-00-782-1349	2	15	5962-01-078-5915	4	45
5940-00-827-2653	7	6		5	55
5961-00-847-5247	4	3	5962-01-078-5916	4	41
	5	1		5	45
5935-00-880-8896	14	12	5905-01-078-5918	4	42
5310-00-883-9384	2	12	5905-01-078-5919	4	44
5935-00-900-2084	14	11	5905-01-078-5920	4	48
5961-00-903-2990	4	1	5905-01-078-5921	4	46
	5	3	5805-01-078-5953	3	1
5935-00-905-2071	15	1	5803-01-079-3683	6	21
5961-00-925-3777	4	20	5995-01-079-3718	1	11
	5	15	5995-01-079-3719	1	31
	6	7	5962-01-079-3781	5	53
5310-00-929-6395	1	25	5962-01-079-6545	4	47
5310-00-933-8118	1	22	5915-01-030-1276	4	16
	2	14	5910-01-083-6088	9	20
5310-00-933-8120	2	11	5320-01-092-0276	4	51
5310-00-934-9748	2	13		5	56
5310-00-934-9761	1	30		6	22
5961-00-949-1440	5	16	5935-01-092-4267	1	14
5961-00-951-8757	5	17	5935-01-092-4268	1	17
5320-00-957-1410	1	29	5955-01-093-0488	6	20
5305-00-969-6495	7	30	5935-01-093-0489	6	19
5310-00-973-8660	1	26	5910-01-105-8491	9	27
5535-00-990-5530	14	9	5961-01-120-1235	10	1
5905-01-015-3529	4	23	5805-01-120-3200	3	3
5961-01-016-8475	9	45	5805-01-120-3208	3	2
5935-01-017-3275	16	2	5805-01-121-6545	1	2
59C5-01-017-4891	5	28	5905-01-130-8966	9	119
5953-01-022-2089	4	39	5305-01-135-3487	2	9
	5	44	5950-01-144-5474	9	35
9390-01-022-2188	2	7	5950-01-144-5475	9	36
5935-01-025-6186	4	17	5950-01-144-5476	9	37
	5	13	5950-01-144-5477	9	38
	6	5	5950-01-144-7574	9	39
5962-01-026-2493	5	46	5950-01-144-7575	9	40
5962-01-027-6863	5	47	5950-01-144-7576	9	41



## NATIONAL STOCK NUMBER AND PART NUMBER INDEX

## NATIONAL STOCK NUMBER INDEX

STOCK NUMBER	FIGURE NO.	ITEM NO.	STOCK NUMBER	FIGURE NO.	ITEM NO.
5935-01-144-7619	4	18			
	5	14			
5950-01-144-7654	11	7			
5910-01-146-4317	9	14			
5995-01-146-6176	1	32			
5961-01-148-8413	9	96			
5905-01-149-5107	9	80			
5935-01-149-5205	16	3			
	18	3			
5999-01-152-6771	19	4			
5999-01-152-6772	19	1			
5962-01-160-5994	4	43			
5905-01-163-3108	9	111			
5950-01-165-1658	7	25			
5935-01-167-5140	15	3			
5910-01-167-6991	9	15			

**CROSS - REFERENCE INDEXES  
PART NUMBER INDEX**

<b>FSCM</b>	<b>PART NUMBER</b>	<b>STOCK NUMBER</b>	<b>FIG.</b>	<b>ITEM</b>
81541	AP12-1-7-2F-1751		14	1
11352	AV70421-226		14	6
11352	AV70421-227		14	7
11352	AV70421-452	5950-01-144-5474	9	35
11352	AV70421-453	5950-01-144-5475	9	36
11352	AV70421-454	5950-01-144-5476	9	37
11352	AV70421-455	5950-01-144-5477	9	38
11352	AV70421-456	5950-01-144-7574	9	39
11352	AV70421-457	5950-01-144-7575	9	40
11352	AV70421-458	5950-01-144-7576	9	41
11352	AV70421-459	5950-01-165-1658	7	25
11352	AV70421-807		7	21
11352	AV70421-811		7	17
11352	AV70421-814		9	143
11352	AV70421-815		12	6
70318	A7501N0400	5970-01-045-6746	1	28
70318	A75C0N1000	5970-01-045-6747	1	20
11352	B70421-225		14	8
11352	B70421-450	5950-01-144-7654	11	7
11352	B70421-806		14	14
81349	CCRC6CG562GR	5910-01-083-6088	9	20
81349	CtR05C130JFDR	5910-01-043-6895	9	91
81349	CR05F271GFODR	5910-01-044-8558	11	4
81349	CO-0311DF(3/16)04 35		15	4
11352	C70421-802		11	17
11352	C70421-804		13	9
11352	C70421-805		12	7
11352	C70421-810		7	20
11352	D70421-125		9	124
11352	070421-126		8	5
11352	D70421-800		7	9
11352	D70421-801		14	5
11352	D70421-803		10	5
22320	F1832-1-06		7	10
34148	F96LO2D11QB	5962-01-078-5916	4	41
			5	45
81349	JANTX1N3890	5961-00-350-8303	13	11
81349	JANTX1N4148-1	5961-00-584-4527	9	6
81349	JANTX1N4473	5961-01-068-1006	9	2
61349	JANTX1N4966	5961-00-272-8340	9	13
81349	JANTX1N5416	5961-00-650-9638	9	5
81349	JANTX1N5552	5961-00-403-3298	9	1
81349	JANTX1N5614	5961-00-156-0618	9	3
			11	1
81349	JANTX1N5615	5961-00-426-9613	9	4
81349	JANTX1N5619	5961-00-476-7855	11	2
81349	JANTXIN750A	5961-00-108-7007	9	10
81349	JANTX1N754A	5961-00-104-1400	9	8
81349	JANTX1N755A	5961-00-105-5733	9	12
81349	JANTX1N756A	5961-00-105-5734	9	11

**CROSS - REFERENCE INDEXES  
PART NUMBER INDEX**

<b>FSCM</b>	<b>PART NUMBER</b>	<b>STOCK NUMBER</b>	<b>FIG.</b>	<b>ITEM</b>
81349	JAI4TX1N759A	5961-00-105-5736	9	9
81349	JANTXIN325	5961-00-350-8249	9	7
81349	JANTX2N1771A	5961-00-195-4094	12	8
81349	JAtITX2N2222A		9	48
81349	JANITX2N2323	5961-00-233-4851	9	50
81349	JANTX2N2369A	5961-00-420-3668	9	49
81349	JANTX2N2905A		9	46
81349	JANTX2N3057A	5961-00-422-3485	9	44
61349	JANTX2N3499	5961-00-758-5815	9	47
81349	JANTX2N3585	5961-00-272-8477	9	43
81349	JANTX2N3902	5961-00-230-7998	11	5
81349	JArFTX2k5416	5961-01-016-8475	9	45
81349	JANTX2H5665	5961-00-189-2087	10	2
81349	JANTX2N6385	5961-01-120-1235	10	1
81349	JANTX2N682	5961-00-459-4005	13	13
81349	JAN1N4126	5961-00-361-9482	5	4
81349	JANIN4148-1	5961-01-038-6918	4	2
			5	2
81349	JAN1N4372A	5961-00-903-2990	4	1
			5	3
81349	JAN1N748A	5961-00-847-5247	4	3
			5	1
81349	JAN2N2222A	5961-00-951-8757	5	17
81349	JAN2N2905A	5961-00-949-1440	5	16
81349	JAN2N2907A	5961-00-925-3777	4	20
			5	15
			6	7
81349	JAN2N2920	5961-00-104-8378	4	19
81349	K05BX104K		7	24
81349	LC36G02	6210-00-151-5276	14	3
81349	LH39/1	6210-00-176-4928	14	2
27014	LM72308838	5962-00-417-1080	9	123
96906	MS15795-803	5310-00-595-6211	1	23
96906	MS15795-804	5310-00-782-1349	2	15
96936	MS15795-842	5310-00-883-9384	2	12
96906	MS16535A81	5320-01-092-0276	4	51
			5	56
			6	22
96906	MS20605AD4W6	5320-00-957-1410	1	29
969C6	MS24693-C1	5305-00-763-6009	7	34
96906	MS24693-C25	5305-00-969-6495	7	30
96906	MS25237-327	6240-00-155-7836	14	4
96906	MS27467T23B535	5935-01-017-3275	16	2
96906	MS27467T23553SA	5935-01-043-6929	18	2
96906	MS27502B23C	5935-00-361-8559	1	15
96906	MS3124E-14-5P	5935-00-880-8896	14	12
96906	MS3124E14-SS	5935-00-900-2084	14	11
96906	MS3126F14-5S	5935-00-761-3885	15	2
96906	MS3180-14C	5935-00-905-2071	15	1
96906	MS3187-16	5935-00-198-4007	14	10
96906	MS3214-7	5310-00-137-3397	19	5

**CROSS - REFERENCE INDEXES  
PART NUMBER INDEX**

<b>FSCM</b>	<b>PART NUMBER</b>	<b>STOCK NUMBER</b>	<b>FIG.</b>	<b>ITEM</b>
96906	MS3367-1-9		1	8
96906	MS35338-135	5310-00-933-8118	1	22
			2	14
95906	MS35338-136	5310-00-929-6395	1	25
96906	MS3533S-138	5310-00-933-8120	2	11
96906	MS35649-244	5310-00-934-9748	2	13
96906	MS35649-264	5310-00-934-9761	1	30
96906	MS39087-5	5340-00-060-5957	2	3
96906	MS51957-14	5305-00-054-5648	2	16
96905	MS51957-15	5305-00-054-5649	1	21
95936	MS51957-29	5305-00-054-6653	1	24
969C6	551958-64	5305-00-059-3660	1	18
			2	10
96906	MS77068-2	5940-00-827-2653	7	6
81349	M33510-30003BCB	5962-01-027-6863	5	47
81349	M38510/00302BCB	5962-00-024-0653	6	17
81349	M38510/01001BEB	5962-00-428-7809	5	49
81349	M38510/01306BEB	5962-00-369-7641	5	52
			6	16
81349	M3S510/10102BIC	5962-00-274-0200	6	18
81349	N38510/30007BCB	5962-01-026-2493	5	46
81349	1138510/30102BCB	5952-01-058-1539	5	51
81349	M38510/30301BCB	5952-01-039-6395	5	50
81349	M39003-01-2979	5910-00-192-7180	4	11
			5	8
			6	1
81349	M39003-01-2994	5910-00-156-7293	9	25
81349	M39003/01-2966	5910-00-007-2001	11	3
81349	H39003/01-2974	5910-00-236-8740	4	4
81349	M39003/01-2933	5910-00-007-7471	8	3
			9	32
81349	M39003/01-2988	5910-00-010-8159	9	21
81349	M39003/01-2991	5910-00-007-3974	4	13
			5	6
			6	2
81349	M39003/01-3021	5910-00-236-8745	9	31
81349	M39003/01-3024	5910-00-144-4381	4	10
			5	9
			6	4
81349	M39003/01-3026	5910-00-144-4383	8	2
			9	28
81349	M39003/01-3032	5910-00-154-0547	4	7
			9	33
81349	M39003/01-3076	5910-00-495-0042	5	12
81349	M39003/01-3091	5910-00-236-8773	9	17
81349	M39003/01-3100	5910-00-236-8767	9	26
81349	'39003/01-3138	5910-00-164-2978	8	1
			9	23
81349	M39003/01-3141	5910-00-010-8184	9	22
81349	M39006/21-0154	5910-01-105-8491	9	27
81349	M39014-02-1360	5910-00-113-5465	5	5

**CROSS - REFERENCE INDEXES  
PART NUMBER INDEX**

<b>FSCM</b>	<b>PART NUMBER</b>	<b>STOCK NUMBER</b>	<b>FIG.</b>	<b>ITEM</b>
81349	H39014/01-1336	5910-00-113-5471	4	9
81349	M39014/01-1348	5910-00-156-5999	5	10
81349	M39014/01-1351	5910-00-113-5276	4	6
81349	M39014/01-1353	5910-00-199-5335	9	34
81349	M39014/01-1357	5910-00-010-8666	9	30
81349	H39014/01-1566	5910-00-098-9242	9	18
81349	M39014/01-1572	5910-00-107-7418	5	11
81349	M39014/01-1575	5910-00-124-0659	9	29
81349	H39014/01-1593	5910-00-010-8717	8	4
			9	19
			12	9
			13	12
81349	H39014/02-1208	5910-00-127-2407	4	14
81349	M39014/02-1214	5910-00-171-0015	4	15
81349	M39014/02-1335	5910-00-113-9716	4	8
81349	M39014/02-1350	5910-00-113-5499	4	5
81349	M39014/2-1236	5910-00-113-5286	9	24
81349	M39018/01-10181		9	16
81349	M39018/03-0791	5910-01-167-6991	9	15
81349	M55074/1-01	5935-00-577-8846	1	33
			16	5
			17	1
			18	5
81349	155164/5-41TB-6		7	12
81349	M55302/26-08	5935-00-628-9293	9	42
81349	M55302/27-30	5935-00-628-9297	7	11
80205	NAS1523AA3B	5330-00-009-3948	2	8
70674	PJ982	6		6
81349	RCR07G100JS	5905-00-107-0656	9	69
81349	RCR07G102JS	5905-00-110-7620	4	29
			5	18
			6	10
			9	52
81349	RCR076122JS	5905-00-131-1255	9	82
81349	RCR07G123JS	5905-00-106-1278	9	54
81349	RCR07G151JS	5905-00-119-8811	9	70
81349	RCR07G152JS	5905-00-106-1356	9	88
81349	RCR07G153JS	5905-00-116-8555	9	66
81349	RCR07G154JS	5905-00-114-5339	9	77
81349	RCR07G160JS	5905-00-126-6699	9	87
81349	RCR07G182JS	5905-00-114-5343	9	110
81349	RCR07G183JS	5905-00-115-3560	9	61
81349	RCR07G202JS	5905-00-114-0708	9	118
81349	RCR07G203JS	5905-00-106-9356	5	36
81349	RCR07G223JS	5905-00-116-8556	9	120
81Z49	RCR07G270JS	5905-00-113-4860	9	114
81349	RCR07G272JS	5905-00-111-4727	9	95
81349	RCR07G273JS	5905-00-119-3504	9	58
31349	RCR07G330JS	5905-00-135-6045	9	102
81349	RCR07G331JS	5905-00-114-0710	4	24
			5	24

**CROSS - REFERENCE INDEXES  
PART NUMBER INDEX**

<b>FSCM</b>	<b>PART NUMBER</b>	<b>STOCK NUMBER</b>	<b>FIG.</b>	<b>ITEM</b>
81349	RCR07G333JS	5905-00-118-4559	9	81
81349	RCR07G362JS	5905-00-104-8369	9	93
81349	RCR07G364JS	5905-00-141-0741	9	59
81349	RCR07G391JS	5905-00-121-9932	9	99
81349	RCR07G393JS	5905-00-115-8055	9	78
81349	RCR07G431JS	5905-00-135-3974	9	76
81349	RCR07G432JS	5905-00-136-8431	9	62
81349	RCR07G473JS	5905-00-141-0717	5	21
81349	RCR07G474JS	5905-00-105-7767	6	9
81349	RCR07G512JS	5905-00-111-1679	9	103
81349	RCR07G563JS	5905-00-106-1357	9	67
81349	RCR07G682JS	5905-00-110-7622	6	12
			9	79
81349	RCR07G684JS	5905-00-104-8357	4	31
			5	20
81349	RCR07G820JS	5905-00-104-8363	5	37
81349	RCR07G821JS	5905-00-119-8768	9	109
81349	RCR07G822JS	5905-00-104-8358	4	21
			5	19
			6	8
81349	RCR20G122JS	5905-00-141-0592	9	84
81349	RCR20G124JS	5905-00-104-8335	9	60
81349	RCR20G472JS	5905-00-141-0595	4	22
31349	RCR32G392JS	5905-00-247-8728	9	55
81349	RCR42G623JS	5905-00-138-1241	9	51
81349	RER60FR133FR		10	3
81349	RER60F15ROFR		7	2
81349	RER60F5110FR		11	6
81349	RJR24FX202P	5905-01-017-4891	5	28
81349	RJR24FX203P	5905-01-015-3529	4	23
07933	RM4131T/883B		4	40
			5	54
81349	RNC55HFSVFR		9	64
81349	RNC55H1001FS	5905-00-138-3376	5	35
			9	71
81349	RNC55H1002FS	5905-00-223-2741	5	23
			6	11
			9	74
81349	RNC55H1052FS	5905-00-137-4815	9	101
81349	RNC55H1301FR	5905-00-305-5225	5	38
			9	108
81349	RNC55H1331FS	5905-00-302-4161	4	27
81349	RNC55H1332FS	5905-00-112-1392	4	36
81349	RNC55H1501FS	5905-00-480-5196	9	115
81349	RNC55H1622FS	5905-00-401-7433	9	112
81349	RNC55H1651FS	5905-00-484-7887	9	104
81349	RNC55H1822FS	5905-00-243-1912	9	85
81349	RNC55H1962FS	5905-00-256-8893	4	32
			5	29
81349	RNC55H2002FS	5905-00-412-4048	5	39
81349	RNC55H2052FS	5905-00-432-6364	5	25

**CROSS - REFERENCE INDEXES  
PART NUMBER INDEX**

<b>FSCM</b>	<b>PART NUMBER</b>	<b>STOCK NUMBER</b>	<b>FIG.</b>	<b>ITEM</b>
81349	RNC55H2370FS	5905-00-152-8441	4	28
81349	RNC55H2371FS	5905-00-402-1194	9	100
81349	RNC55H2372FS	5905-00-479-9946	9	73
81349	RNC55H2431FR		9	75
81349	RNC55H2611FS	5905-00-481-1321	9	89
81349	RNC55H3010FS	5905-00-139-1922	4	30
81349	RNC55H3012FS	5905-00-005-2902	9	83
81349	RNC55H3092FS	5905-00-137-0573	9	57
81349	RNC55H3161FS	5905-00-006-5571	9	90
81349	RNC55H3482FS	5905-00-236-0513	5	27
81349	RNC55H3572FS	5905-00-431-5157	6	13
81349	RNC55H3651FS	5905-00-256-5030	9	63
81349	RNC55H3742FS	5905-00-758-4782	9	56
81349	RNC55H3921FS	5905-00-003-5782	5	41
81349	RNC55H4021FS	5905-00-481-8456	9	98
81349	RNC55H4122FS	5905-00-721-0036	4	34
81349	RNC55H4321FS	5905-00-121-6327	9	107
81349	RNC55H4421FS	5905-00-401-7436	9	105
81349	RNC55H4750FS	5905-00-492-2173	4	26
81349	RNC55H4992FS	5905-00-236-0895	6	14
81349	RNC55H5111FS	5905-00-138-7399	9	65
81349	RNC55H5112FS	5905-00-005-2880	5	30
81349	RNC55H5360FS	5905-00-169-3419	4	25
			5	31
81349	RNC55H5491FS	5905-00-219-8638	5	34
81349	RNC55H5492FS	5905-00-150-0477	4	33
81349	RNC55H5620FS	5905-00-402-6917	5	22
81349	RHC55H5902FS	5905-00-721-3681	5	40
81349	RNC55H6040FS	5905-00-003-7717	6	15
81349	RNC55H6041FS	5905-00-306-0647	9	94
81349	RNC55H6192FS	5905-00-451-7410	5	26
81349	RHC55H6490FR	5905-00-138-3361	7	22
81349	RNC55H6491FS	5905-00-139-1925	9	113
81349	RNC55H6810FR	5905-00-356-4199	9	117
813+9	RNC55H7151FS	5905-00-450-5195	9	68
81349	RNC55H7500FS	5905-00-139-1928	9	106
81349	RNC55H8060FS	5905-00-431-5160	9	97
81349	RNC55H8061FS	5905-00-412-0763	9	116
81349	RNC55H86R6FS	5905-00-028-1790	5	32
81349	RNC55H8661FS	5905-00-432-0331	4	35
81349	RNC55H9091FS	5905-00-186-2210	9	92
81349	RWR7451210FS	5905-01-130-8966	9	119
81349	RWR81SR100FR		9	53
81349	RWR81S1R00FS	5905-01-046-0479	9	72
81349	RWR81S4R02FS	5905-01-163-3108	9	111
81-49	RWR82S1301FR		5	33
81349	RWR89SR806FR	5905-00-189-0735	9	86
330S5	SC19030-154	5910-01-146-4317	9	14
11352	SC1332		9	138
11752	SC1333		9	134
11352	SC1335		10	11

## CROSS - REFERENCE INDEXES

## PART NUMBER INDEX

FSCM	PART NUMBER	STOCK NUMBER	FIG.	ITEM
11352	SC1569/0		9	137
11352	SC1578/1/428		13	3
11352	SC1578/256		7	31
11352	SC1579/1/4		13	2
11352	SC1579/10		12	2
			13	5
11352	SC1579/		7	36
			9	132
			10	12
			11	12
11352	SC1580/6C		7	14
			10	4
			11	9
11352	SC1589/2		7	26
11352	SC1758/1/8A6		9	128
11352	SC1758/3/16		7	13
11352	SC1758/5/16		7	3
11352	SC1817/X256-03		10	9
			11	20
			12	5
11352	SC1817/X256-06		7	40
11352	SC1817/X440-12		9	142
11352	SC1817/X632-05		9	126
11352	SC1817/X632-07		10	6
			11	18
11352	SC1817/X632-10		7	37
11352	SC1817/X632-16		7	42
11352	SC1817/X632-4		7	38
11352	SC1817X632-05		7	39
11352	SC1822/6		10	13
			11	10
11352	SC1822/804		7	41
11352	SC1825/1032		12	4
			13	6
11352	SC1825/440		11	15
11352	SC1825/6-32		11	11
11352	SC1825/632		7	35
			9	133
			10	8
11352	SC1849/X256-03		7	32
11352	SC1849/X440-07		11	14
11352	SC1849/X632-04		14	13
11352	SC1849/X632-12		9	127
11352	SC1885		10	14
			11	8
11352	SC1890/16		7	28
11352	SC1890/49		9	136
11352	SC1890/69		9	140
11352	SC1890/70		11	16
11352	SC1894/2-032		9	130
11352	SC1900/1		9	129



**CROSS - REFERENCE INDEXES  
PART NUMBER INDEX**

<b>FSCM</b>	<b>PART NUMBER</b>	<b>STOCK NUMBER</b>	<b>FIG.</b>	<b>ITEM</b>
11352	SC1928/15-050		9	125
11352	SC1928/41-040		9	141
11352	SC1930/X256-08		7	29
11352	SC2067/62-002		7	27
			12	10
			13	10
11352	SC2067/70-2		11	13
			13	14
11352	SC2067/72-005		9	144
11352	SC2139/X256N08		9	135
11352	SC2139/X440N08		9	139
11352	SC2170-6		7	44
11352	SC2177/65-050		12	1
			13	8
11352	SC2177/80-050		13	4
11352	SC2229/25		13	1
11352	SC2230/1		12	3
			13	7
11352	SC2283-1		10	7
			11	19
11352	SC2284-1		10	10
11352	SC2332		7	33
11352	SC2357		7	43
34333	G501524J/883B		9	122
80063	SM-A-742210-6	5999-01-152-6771	19	4
80063	SM-A-742210-9	5999-01-152-6772	19	1
60063	SM-A-742435-1	5962-01-079-6545	4	47
80063	SM-A-742443-1	5962-01-078-5915	4	45
			5	55
80063	SM-A-742456-1	5950-01-022-2089	4	39
			5	44
80063	SM-A-811738-1		1	11A
80063	SM-A-838111-1	5962-01-079-3781	5	53
80063	SM-A-838209-1	5915-01-080-1276	4	16
80063	SM-A-838229-2	5905-01-078-5918	4	42
80063	SN-A-838229-5	5905-01-078-5919	4	44
80063	SM-A-838229-6	5905-01-078-5920	4	48
80063	SM-A-838229-7	5905-01-078-5921	4	46
80063	SM-A-838277-1	5805-01-079-3683	6	21
80063	SM-A-838684-71		1	11B
80063	SM-B-416109-1	5310-00-973-8660	1	26
60063	SM-B-809847		4	50
80063	SM-B-811470		2	4
80063	SM-B-816640		6	23
80063	SM-B-816654		5	57
80063	SM-C-811405		1	10
80063	SM-D-811235	5995-01-079-3719	1	31
80063	SM-D-811404		1	16
80063	SM-D-811454		1	1
80063	SM-D-811455		1	13
80063	SM-D-811456		2	2

**CROSS - REFERENCE INDEXES  
PART NUMBER INDEX**

<b>FSCM</b>	<b>PART NUMBER</b>	<b>STOCK NUMBER</b>	<b>FIG.</b>	<b>ITEM</b>
80063	SN-0-811745	5995-01-146-6176	1	32
80063	SM-D-812377-1	5995-01-079-3718	1	11
80063	SN-D-814619		1	4
80063	SM-D-814619-1		19	2
80063	SH-D-817305-1		1	12
80063	St1-E-809647	5805-01-078-5953	3	1
80063	SH-E-816540	5805-01-120-3200	3	3
80063	SN-E-816554	5805-01-120-3208	3	2
46384	SOS-6440-22	5310-00-757-8629	19	3
07418	S1400-23C5.5-PA-34		16	1
			18	1
07418	51613-2510-2.5C-34	5935-01-149-5205	16	3
			18	3
07418	S1617-1208-2.0C-34	5935-01-167-5140	15	3
81349	WM-130A/G	6145-00-577-8480	16	4
			17	2
			18	4
11352	10-101964-143	5935-00-990-5580	14	9
16845	1000-409-16	5961-01-148-8413	9	96
16845	1000-483-23	5905-01-149-5107	9	80
04729	1316-N04-F12-256		7	18
04655	1369215	5962-01-160-5994	4	43
28009	16773891-001	5930-00-375-9176	5	42
11352	1692-632-A-6		7	4
11352	1694-632-A-6		7	1
			9	131
32897	20A01229-15	5955-01-093-0488	6	20
32897	20A01229-26	5955-01-093-0489	6	19
77820	21-293723-200	5935-01-092-4267	1	14
77820	21-293723-201	5935-01-092-4268	1	17
04222	2225-470000PF-PO M20PCT25WVDC	5910-00-318-2161	4	12
			5	7
			6	3
11352	70421-01	5805-01-121-6545	1	2
11352	70421-301		7	16
11352	70421-302		7	5
11352	70421-303		7	8
11352	70421-304		7	19
11352	70421-305		7	15
11352	70421-306		7	23
11352	70421-307		7	7
11352	70421-308		9	121
09353	7108A		4	38
09353	7201A		4	37
			5	43
06540	755090A0074-1	5305-01-135-3487	2	9
87990	755090A0084-1	5935-01-025-6186	4	17

CROSS - REFERENCE INDEXES  
PART NUMBER INDEX

FSCM	PART NUMBER	STOCK NUMBER	FIG.	ITEM
87990	755090A0084-1	5935-01-025-6186	5	13
			6	5
87990	755090A0409-1		1	9
87990	755090A0410-1		1	5
87990	755090A0411-1		1	3
87990	755090A0413-1	9390-01-022-2188	2	7
87990	755090A0433-1		2	1
87990	755090A0440-1		2	5
87990	755090A0442-1		2	6
50464	7558687-01	5962-01-067-1163	4	49
			5	48
74545	8215-C		15	5
71279	94-450-1055-01-0	5935-01-144-7619	4	18
	3-00			
			5	14

RECOMMENDED CHANGES TO EQUIPMENT TECHNICAL PUBLICATIONS



THEN...JOT DOWN THE  
DOPE ABOUT IT ON THIS FORM.  
CAREFULLY TEAR IT OUT, FOLD IT  
AND DROP IT IN THE MAIL.

**SOMETHING WRONG WITH PUBLICATION**

FROM: (PRINT YOUR UNIT'S COMPLETE ADDRESS)

DATE SENT

PUBLICATION NUMBER

PUBLICATION DATE

PUBLICATION TITLE

BE EXACT PIN-POINT WHERE IT IS

PAGE NO.	PARA-GRAPH	FIGURE NO.	TABLE NO.
----------	------------	------------	-----------

IN THIS SPACE, TELL WHAT IS WRONG  
AND WHAT SHOULD BE DONE ABOUT IT.

TEAR ALONG PERFORATED LINE

PRINTED NAME, GRADE OR TITLE AND TELEPHONE NUMBER

SIGN HERE

DA FORM 1 JUL 79 2028-2

PREVIOUS EDITIONS ARE OBSOLETE.

P.S.--IF YOUR OUTFIT WANTS TO KNOW ABOUT YOUR RECOMMENDATION MAKE A CARBON COPY OF THIS AND GIVE IT TO YOUR HEADQUARTERS.

By Order of the Secretaries of the Army, the Navy and the Air Force:

Official:

JOHN A WICKHAM, JR.  
*General, United States Army*  
*Chief of Staff*

DONALD J. DELANDRO  
*Brigadier General, United States Army*  
*The Adjutant General*

G.B. SCHICK, JR.  
*Rear Admiral, United States Navy*  
*Commander, Naval Electronic*  
*Systems Command*

Official:

EARL T. O'LOUGHLIN  
*General, USAF, Commander, Air Force*  
*Logistics Command*

CHARLES A. GABRIEL  
*General, USAF*  
*Chief of Staff*

DISTRIBUTION:

To be distributed in accordance with DA Form 12-36 literature requirements for CV-3478/TTC,

